

Product datasheet for **TA190011**

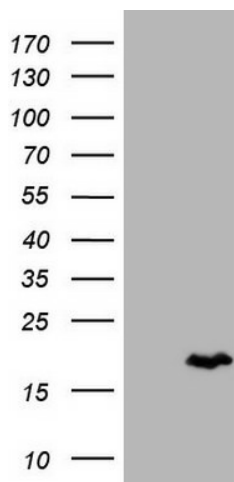
CALCA Mouse Monoclonal Antibody [Clone ID: OTI2D12]

Product data:

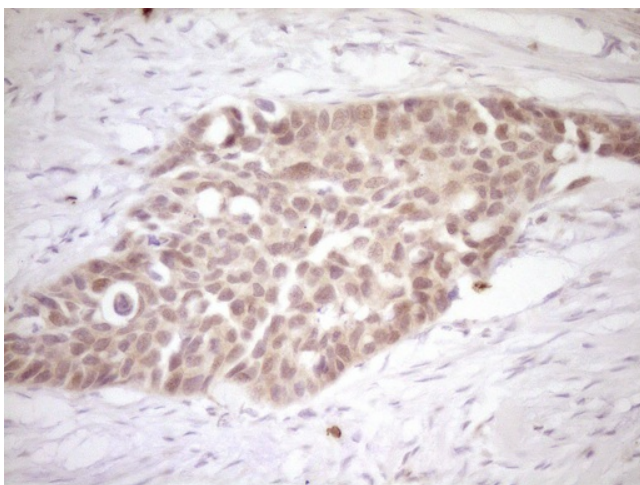
Product Type:	Primary Antibodies
Clone Name:	OTI2D12
Applications:	IHC, WB
Recommended Dilution:	WB 1:2000, IHC 1:150
Reactivity:	Human
Host:	Mouse
Isotype:	IgG1
Clonality:	Monoclonal
Immunogen:	Synthetic peptide (the amino acid sequence is considered to be commercially sensitive) within Human CACLA (NP_001732). The exact sequence is proprietary.
Formulation:	PBS (pH 7.3) containing 1% BSA, 50% glycerol and 0.02% sodium azide.
Concentration:	1 mg/ml
Purification:	Purified from mouse ascites fluids or tissue culture supernatant by affinity chromatography (protein A/G)
Conjugation:	Unconjugated
Storage:	Store at -20°C as received.
Stability:	Stable for 12 months from date of receipt.



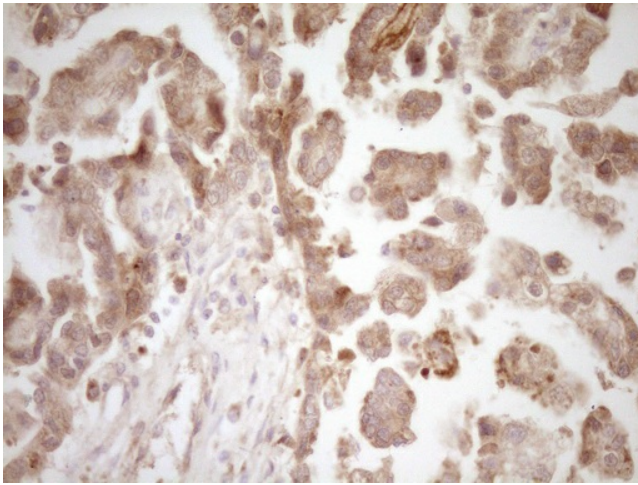
[View online »](#)

Product images:

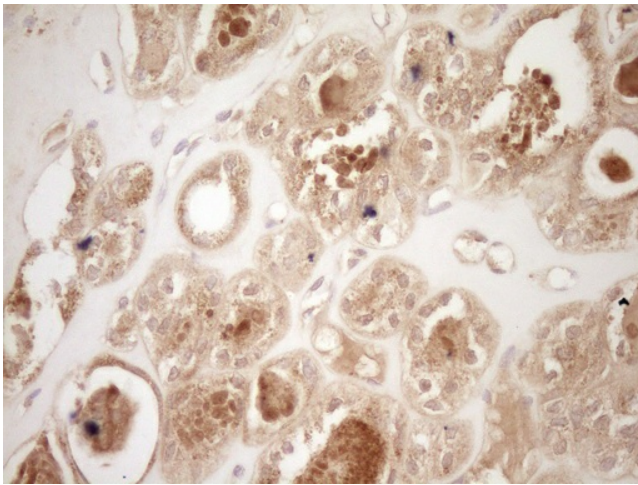
HEK293T cells were transfected with the pCMV6-ENTRY control (Left lane) or pCMV6-ENTRY CALCA ([RC214594], Right lane) cDNA for 48 hrs and lysed. Equivalent amounts of cell lysates (5 ug per lane) were separated by SDS-PAGE and immunoblotted with anti-CALCA.



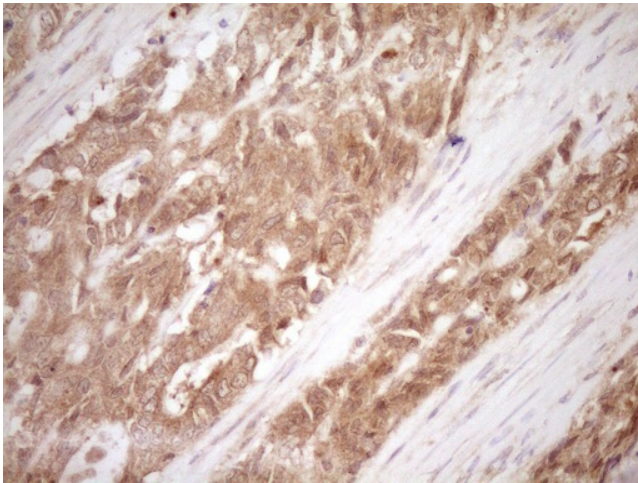
Immunohistochemical staining of paraffin-embedded Carcinoma of Human kidney tissue using anti-CALCA mouse monoclonal antibody. (Heat-induced epitope retrieval by Tris-EDTA, pH8.0, TA190011)



Immunohistochemical staining of paraffin-embedded Adenocarcinoma of Human ovary tissue using anti-CALCA mouse monoclonal antibody. (Heat-induced epitope retrieval by Tris-EDTA, pH8.0, TA190011)



Immunohistochemical staining of paraffin-embedded Carcinoma of Human thyroid tissue using anti-CALCA mouse monoclonal antibody. (Heat-induced epitope retrieval by Tris-EDTA, pH8.0, TA190011)



Immunohistochemical staining of paraffin-embedded Adenocarcinoma of Human endometrium tissue using anti-CALCA mouse monoclonal antibody. (Heat-induced epitope retrieval by Tris-EDTA, pH8.0, TA190011)