

## Product datasheet for **TA180148**

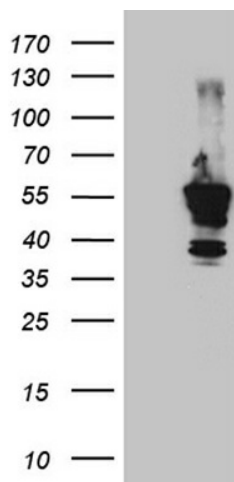
### Mouse monoclonal tdTomato antibody, Clone OTI4B3

#### Product data:

Product Type:	Tag Antibodies
Product Name:	Mouse monoclonal tdTomato antibody, Clone OTI4B3
Clone Name:	OTI4B3
Applications:	WB
Recommended Dilution:	WB: 1:500
Reactivity:	tdTomato
Host:	Mouse
Clonality:	Monoclonal
Immunogen:	A tdTomato tagged recombinant protein expressed in E.coli.
Isotype:	IgG1
Formulation:	PBS (PH 7.3) containing 1% BSA, 50% glycerol and 0.02% sodium azide.
Concentration:	1 mg/ml
Conjugation:	Unconjugated
Storage:	Store at -20°C.
Stability:	Stable for 1 year at -20°C from date of shipment.
Predicted Protein Size:	54.2 kDa



[View online »](#)

**Product images:**

HEK293T cells were transfected with the pCMV6-ENTRY control (Left lane) or pCMV6-ENTRY tdTomato (JB1016\_D07, Right lane) cDNA for 48 hrs and lysed. Equivalent amounts of cell lysates (5 ug per lane) were separated by SDS-PAGE and immunoblotted with anti-tdTomato (1:500).