

Product datasheet for **TA180099M**

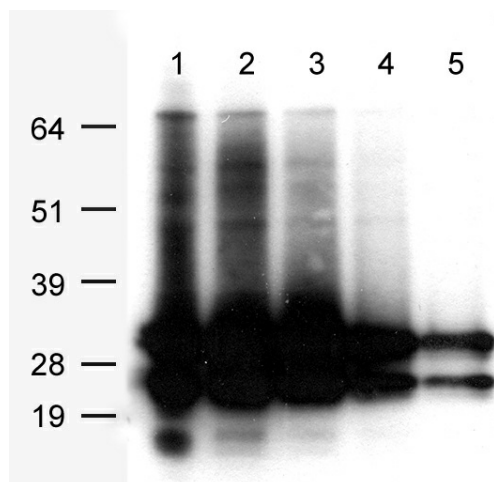
Mouse monoclonal AsRed2 antibody, clone OTI2E2

Product data:

Product Type:	Tag Antibodies
Product Name:	Mouse monoclonal AsRed2 antibody, clone OTI2E2
Clone Name:	OTI2E2 (formerly 200)
Applications:	WB
Recommended Dilution:	WB: 1:2000
Reactivity:	AsRed2
Host:	Mouse
Clonality:	Monoclonal
Immunogen:	A AsRed2 tagged recombinant protein expressed in HEK293T cell.
Isotype:	IgG1
Formulation:	PBS (pH 7.3) containing 1%BSA, 50% glycerol and 0.02% sodium azide
Concentration:	1 mg/ml
Conjugation:	Unconjugated
Storage:	Store at -20°C.
Stability:	Stable for 1 year at -20°C from date of shipment.
Predicted Protein Size:	25.8 kDa



[View online »](#)

Product images:

HEK293T cells were transfected with pCMV6-Entry-AsRed2 cDNA for 48 hours. Serial dilution of AsRed2 expression lysates were separated by SDS-PAGE and immunoblotted with anti-AsRed2 ([TA180099], 1:1000) (Lane 1, 5ug; Lane 2, 2.5ug; Lane 3, 1.25ug; Lane 4, 0.625ug; Lane 5, 0.3125ug).