

## Product datasheet for **TA180085M**

### Mouse monoclonal E2-Crimson antibody, clone OTI9B3

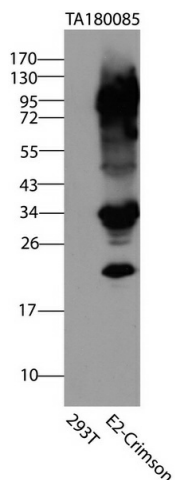
#### Product data:

Product Type:	Tag Antibodies
Product Name:	Mouse monoclonal E2-Crimson antibody, clone OTI9B3
Clone Name:	OTI9B3 (formerly 9B3)
Applications:	WB
Recommended Dilution:	WB: 1:2000
Reactivity:	E2-Crimson
Host:	Mouse
Clonality:	Monoclonal
Immunogen:	A E2-Crimson tagged recombinant protein expressed in E.coli.
Isotype:	IgG2a
Formulation:	PBS (pH 7.3) containing 1%BSA, 50% glycerol and 0.02% sodium azide
Concentration:	4.85mg/ml
Conjugation:	Unconjugated
Storage:	Store at -20°C.
Stability:	Stable for 1 year at -20°C from date of shipment.
Predicted Protein Size:	26.2 kDa
Note:	This antibody also recognizes DsRed-Monomer protein.



[View online »](#)

## Product images:



HEK293T cells were transfected with the pCMV6-ENTRY control (Left lane) or pCMV6-ENTRY E2-Crimson (Right lane) cDNA for 48 hrs and lysed. Equivalent amounts of cell lysates (5 ug per lane) were separated by SDS-PAGE and immunoblotted with anti-E2-Crimson ([TA180085], 1:2000).