

## Product datasheet for **TA180053S**

### Mouse monoclonal mOrange/mOrange2 antibody, clone OTI4E10

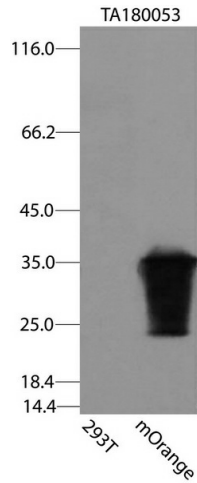
#### Product data:

Product Type:	Tag Antibodies
Product Name:	Mouse monoclonal mOrange/mOrange2 antibody, clone OTI4E10
Clone Name:	OTI4E10 (formerly 4E10)
Applications:	WB
Recommended Dilution:	WB: 1:2000
Reactivity:	mOrange, mOrange2
Host:	Mouse
Clonality:	Monoclonal
Immunogen:	This antibody is raised against a recombinant protein of mOrange expressed in HEK293 cells. It recognizes both mOrange and mOrange2 proteins.
Isotype:	IgG2b
Formulation:	PBS (pH7.3) containing 1% BSA, 50% glycerol and 0.02% sodium azide
Concentration:	1 mg/ml
Conjugation:	Unconjugated
Storage:	Store at -20°C.
Stability:	Stable for 1 year at -20°C from date of shipment.
Predicted Protein Size:	26.7 kDa

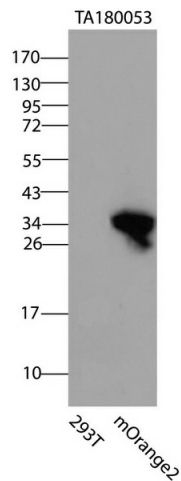


[View online »](#)

Product images:



HEK293T cells were transfected with the pCMV6-ENTRY control (Left lane) or pCMV6-ENTRY mOrange (Right lane) cDNA for 48 hrs and lysed. Equivalent amounts of cell lysates (5 ug per lane) were separated by SDS-PAGE and immunoblotted with anti-mOrange/mOrange2 ([TA180053], 1:2000).



HEK293T cells were transfected with the pCMV6-ENTRY control (Left lane) or pCMV6-ENTRY mOrange2 (Right lane) cDNA for 48 hrs and lysed. Equivalent amounts of cell lysates (5 ug per lane) were separated by SDS-PAGE and immunoblotted with anti-mOrange/mOrange2 ([TA180053], 1:2000).