

Product datasheet for **TA180029**

Mouse monoclonal mRaspberry/AmCyan1 antibody, clone OT12A6

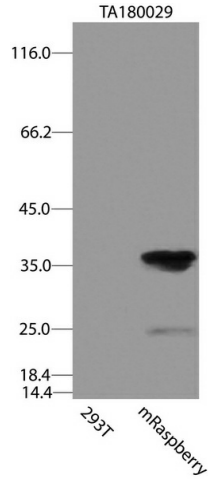
Product data:

Product Type:	Tag Antibodies
Product Name:	Mouse monoclonal mRaspberry/AmCyan1 antibody, clone OT12A6
Clone Name:	OT12A6 (formerly 2A6)
Applications:	WB
Recommended Dilution:	WB: 1:2000
Reactivity:	mRaspberry, AmCyan1
Host:	Mouse
Clonality:	Monoclonal
Immunogen:	This antibody is raised against a recombinant protein of mRaspberry expressed in HEK293 cells. It recognizes both mRaspberry and AmCyan1 proteins.
Isotype:	IgG1
Formulation:	PBS (pH 7.3) containing 1%BSA, 50% glycerol and 0.02% sodium azide
Concentration:	2.99mg/ml
Conjugation:	Unconjugated
Storage:	Store at -20°C.
Stability:	Stable for 1 year at -20°C from date of shipment.
Predicted Protein Size:	25.5 kDa

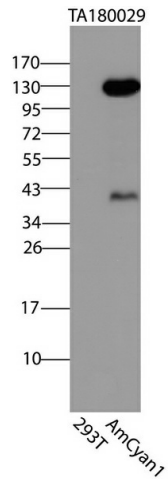


[View online »](#)

Product images:



HEK293T cells were transfected with the pCMV6-ENTRY control (Left lane) or pCMV6-ENTRY mRaspberry (Right lane) cDNA for 48 hrs and lysed. Equivalent amounts of cell lysates (5 ug per lane) were separated by SDS-PAGE and immunoblotted with anti-mRaspberry/AmCyan1 (TA180029, 1:2000).



HEK293T cells were transfected with the pCMV6-ENTRY control (Left lane) or pCMV6-ENTRY AmCyan1 (Right lane) cDNA for 48 hrs and lysed. Equivalent amounts of cell lysates (5 ug per lane) were separated by SDS-PAGE and immunoblotted with anti-mRaspberry/AmCyan1 (TA180029, 1:2000).