

## Product datasheet for **TA180028M**

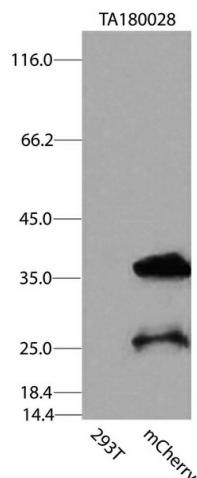
### Mouse monoclonal mCherry antibody, clone OTI10G6

#### Product data:

Product Type:	Tag Antibodies
Product Name:	Mouse monoclonal mCherry antibody, clone OTI10G6
Clone Name:	OTI10G6 (formerly 10G6)
Applications:	WB
Recommended Dilution:	WB: 1:2000
Reactivity:	mCherry
Host:	Mouse
Clonality:	Monoclonal
Immunogen:	This antibody is raised against a recombinant protein of mCherry expressed in HEK293 cells.
Isotype:	IgG1
Formulation:	PBS (pH 7.3) containing 1%BSA, 50% glycerol and 0.02% sodium azide
Concentration:	1 mg/ml
Conjugation:	Unconjugated
Storage:	Store at -20°C.
Stability:	Stable for 1 year at -20°C from date of shipment.
Predicted Protein Size:	26.7 kDa



[View online »](#)

**Product images:**

HEK293T cells were transfected with the pCMV6-ENTRY control (Left lane) or pCMV6-ENTRY mCherry (Right lane) cDNA for 48 hrs and lysed. Equivalent amounts of cell lysates (5 ug per lane) were separated by SDS-PAGE and immunoblotted with anti-mCherry ([TA180028], 1:2000).