

## Product datasheet for **TA180016M**

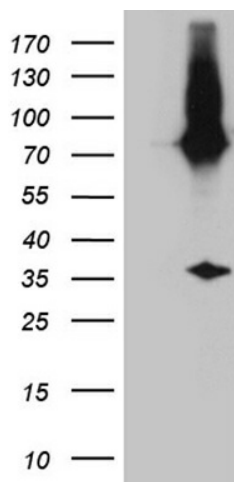
### Mouse monoclonal E2-Crimson antibody, Clone OTI3E12

#### Product data:

Product Type:	Tag Antibodies
Product Name:	Mouse monoclonal E2-Crimson antibody, Clone OTI3E12
Clone Name:	OTI3E12
Applications:	WB
Recommended Dilution:	WB: 1:500
Reactivity:	E2-Crimson
Host:	Mouse
Clonality:	Monoclonal
Immunogen:	A E2-Crimson tagged recombinant protein expressed in HEK293T cell.
Isotype:	IgG1
Formulation:	PBS (PH 7.3) containing 1% BSA, 50% glycerol and 0.02% sodium azide.
Concentration:	1 mg/ml
Conjugation:	Unconjugated
Storage:	Store at -20°C.
Stability:	Stable for 1 year at -20°C from date of shipment.
Predicted Protein Size:	26.2 kDa



[View online »](#)

**Product images:**

HEK293T cells were transfected with the pCMV6-ENTRY control (Left lane) or pCMV6-ENTRY E2-Crimson (JA1132-C07, Right lane) cDNA for 48 hrs and lysed. Equivalent amounts of cell lysates (5 ug per lane) were separated by SDS-PAGE and immunoblotted with anti-E2-Crimson (1:500).