

Product datasheet for **TA180011M**

Mouse monoclonal AcGFP1/PS-CFP2 antibody, clone OTI4G4

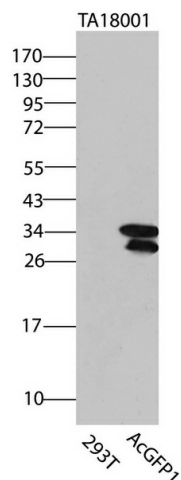
Product data:

Product Type:	Tag Antibodies
Product Name:	Mouse monoclonal AcGFP1/PS-CFP2 antibody, clone OTI4G4
Clone Name:	OTI4G4 (formerly 4G4)
Applications:	WB
Recommended Dilution:	WB: 1:2000
Reactivity:	AcGFP1, PS-CFP2
Host:	Mouse
Clonality:	Monoclonal
Immunogen:	This antibody is raised against a recombinant protein of PS-CFP2 expressed in HEK293 cells. It recognizes both PS-CFP2 and AcGFP1 proteins.
Isotype:	IgG1
Formulation:	PBS (pH 7.3) containing 1%BSA, 50% glycerol and 0.02% sodium azide
Concentration:	3.93mg/ml
Conjugation:	Unconjugated
Storage:	Store at -20°C.
Stability:	Stable for 1 year at -20°C from date of shipment.
Predicted Protein Size:	26.7 kDa

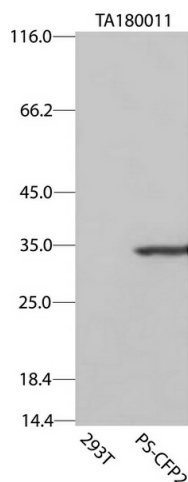


[View online »](#)

Product images:



HEK293T cells were transfected with the pCMV6-ENTRY control (Left lane) or pCMV6-ENTRY AcGFP1 (Right lane) cDNA for 48 hrs and lysed. Equivalent amounts of cell lysates (5 ug per lane) were separated by SDS-PAGE and immunoblotted with anti-AcGFP1/PS-CFP2 ([TA18001], 1:2000).



HEK293T cells were transfected with the pCMV6-ENTRY control (Left lane) or pCMV6-ENTRY PS-CFP2 (Right lane) cDNA for 48 hrs and lysed. Equivalent amounts of cell lysates (5 ug per lane) were separated by SDS-PAGE and immunoblotted with anti-AcGFP1/PS-CFP2 ([TA180011], 1:2000).