

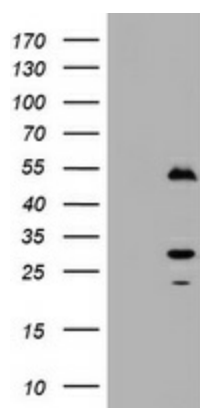
## Product datasheet for TA180010S

### Mouse Monoclonal Timer Antibody, clone OTI3H3

#### Product data:

Product Type:	Tag Antibodies
Product Name:	Mouse Monoclonal Timer Antibody, clone OTI3H3
Clone Name:	OTI3H3
Applications:	IHC, WB
Recommended Dilution:	WB 1:2000, IHC 1:100
Reactivity:	Timer
Host:	Mouse
Clonality:	Monoclonal
Immunogen:	A Timer (switchable) tagged recombinant protein expressed in HEK293T cells
Isotype:	IgG2b
Formulation:	PBS (PH 7.3) containing 1% BSA, 50% glycerol and 0.02% sodium azide.
Concentration:	1 mg/ml
Conjugation:	Unconjugated
Storage:	Store at -20°C.
Stability:	Stable for 1 year at -20°C from date of shipment.

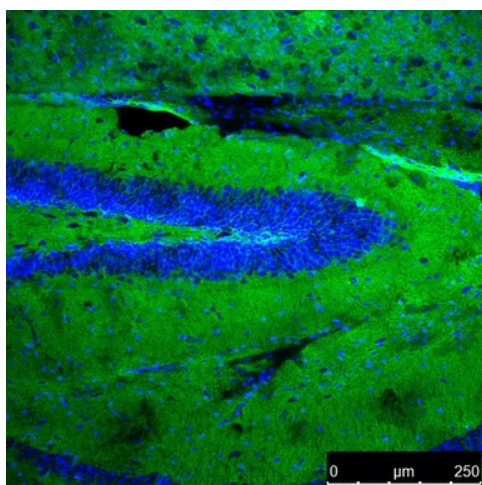
#### Product images:



HEK293T cells were transfected with the pCMV6-ENTRY control (Left lane) or pCMV6-ENTRY Timer (switchable) (Right lane) cDNA for 48 hrs and lysed. Equivalent amounts of cell lysates (5 ug per lane) were separated by SDS-PAGE and immunoblotted with anti-Timer (switchable).



[View online »](#)



Immunohistochemical staining of Frozen section Brain tissue from hGFAP-Cre, Rosa26 TdTomato mice using anti-Timer mouse monoclonal antibody (1:100). Secondary antibody: Alexa 488 goat anti-mouse.