

## Product datasheet for **TA180005M**

### Mouse monoclonal DsRed2 antibody, clone OTI1B11

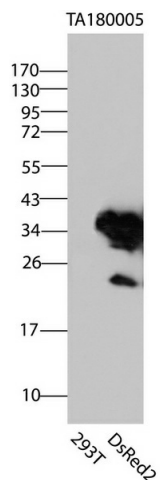
#### Product data:

Product Type:	Tag Antibodies
Product Name:	Mouse monoclonal DsRed2 antibody, clone OTI1B11
Clone Name:	OTI1B11 (formerly 1B11)
Applications:	WB
Recommended Dilution:	WB: 1:2000
Reactivity:	DsRed2
Host:	Mouse
Clonality:	Monoclonal
Immunogen:	A DsRed2 tagged recombinant protein expressed in HEK293T cell.
Isotype:	IgG2b
Formulation:	PBS (pH 7.3) containing 1%BSA, 50% glycerol and 0.02% sodium azide
Concentration:	4.56mg/ml
Conjugation:	Unconjugated
Storage:	Store at -20°C.
Stability:	Stable for 1 year at -20°C from date of shipment.
Predicted Protein Size:	26 kDa
Note:	This antibody also recognizes Timer(switchable) protein.



[View online »](#)

## Product images:



HEK293T cells were transfected with the pCMV6-ENTRY control (Left lane) or pCMV6-ENTRY DsRed2 (Right lane) cDNA for 48 hrs and lysed. Equivalent amounts of cell lysates (5 ug per lane) were separated by SDS-PAGE and immunoblotted with anti-DsRed2 ([TA180005], 1:2000).