

## Product datasheet for **TA180005**

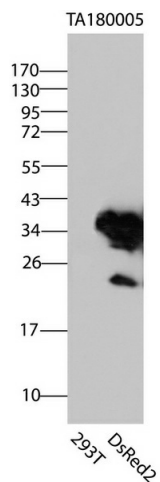
### Mouse monoclonal DsRed2 antibody, clone OTI1B11

#### Product data:

|                         |  |
|-------------------------|--|
| Product Type:           | Tag Antibodies   |
| Product Name:           | Mouse monoclonal DsRed2 antibody, clone OTI1B11                    |
| Clone Name:             | OTI1B11 (formerly 1B11)  |
| Applications:           | WB   |
| Recommended Dilution:   | WB: 1:2000   |
| Reactivity:             | DsRed2   |
| Host:                   | Mouse  |
| Clonality:              | Monoclonal   |
| Immunogen:              | A DsRed2 tagged recombinant protein expressed in HEK293T cell.     |
| Isotype:                | IgG2b  |
| Formulation:            | PBS (pH 7.3) containing 1%BSA, 50% glycerol and 0.02% sodium azide |
| Concentration:          | 4.56mg/ml  |
| Conjugation:            | Unconjugated   |
| Storage:                | Store at -20°C.  |
| Stability:              | Stable for 1 year at -20°C from date of shipment.                  |
| Predicted Protein Size: | 26 kDa   |
| Note:                   | This antibody also recognizes Timer(switchable) protein.           |



[View online »](#)

**Product images:**

HEK293T cells were transfected with the pCMV6-ENTRY control (Left lane) or pCMV6-ENTRY DsRed2 (Right lane) cDNA for 48 hrs and lysed. Equivalent amounts of cell lysates (5 ug per lane) were separated by SDS-PAGE and immunoblotted with anti-DsRed2 (TA180005, 1:2000).