

## Product datasheet for **TA180002M**

### Mouse monoclonal ZsGreen1 antibody, clone OTI2C2

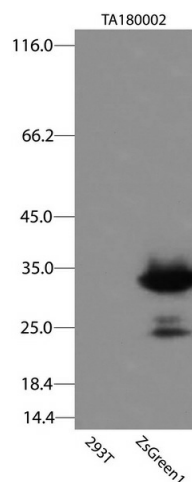
#### Product data:

Product Type:	Tag Antibodies
Product Name:	Mouse monoclonal ZsGreen1 antibody, clone OTI2C2
Clone Name:	OTI2C2 (formerly 2C2)
Applications:	WB
Recommended Dilution:	WB: 1:2000
Reactivity:	ZsGreen1
Host:	Mouse
Clonality:	Monoclonal
Immunogen:	This antibody is raised against a recombinant protein of ZsGreen1 expressed in HEK293 cells.
Isotype:	IgG1
Formulation:	PBS (pH 7.3) containing 1%BSA, 50% glycerol and 0.02% sodium azide
Concentration:	1 mg/ml
Conjugation:	Unconjugated
Storage:	Store at -20°C.
Stability:	Stable for 1 year at -20°C from date of shipment.
Predicted Protein Size:	26 kDa



[View online »](#)

## Product images:



HEK293T cells were transfected with the pCMV6-ENTRY control (Left lane) or pCMV6-ENTRY ZsGreen1 (Right lane) cDNA for 48 hrs and lysed. Equivalent amounts of cell lysates (5 ug per lane) were separated by SDS-PAGE and immunoblotted with anti-ZsGreen1 ([TA180002], 1:2000).