

## Product datasheet for **TA160208**

### env Rabbit Polyclonal Antibody

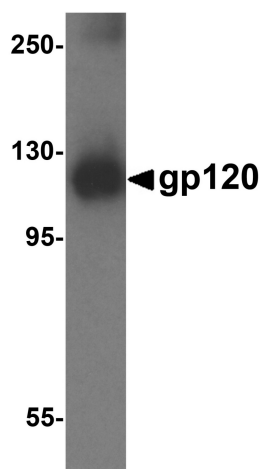
#### Product data:

Product Type:	Primary Antibodies
Applications:	WB
Recommended Dilution:	WB: 1-2µg/mL.
Reactivity:	HIV
Host:	Rabbit
Isotype:	IgG
Clonality:	Polyclonal
Immunogen:	gp120 antibody was raised against a peptide corresponding to 15 amino acids near the center of HIV-1 gp120.
Formulation:	gp120 Antibody is supplied in PBS containing 0.02% sodium azide.
Concentration:	1 mg/ml
Purification:	Purified from mouse ascites fluids or tissue culture supernatant by affinity chromatography (protein A/G)
Conjugation:	Unconjugated
Storage:	Store at -20°C as received.
Stability:	Stable for 12 months from date of receipt.
Predicted Protein Size:	Predicted: 120 kDa; Observed: 120 kDa
Database Link:	<a href="#">P04578</a>
Background:	Human immunodeficiency virus type 1 (HIV-1) entry into target cells is directed by the envelope (Env) glycoproteins, which are present on the surface of HIV-1 virion or infected cells in the form of trimers consisting of gp120/gp41 complexes. The surface subunit, gp120, initiates the entry process by interacting sequentially with the CD4 receptor and a co-receptor CCR5 or CXCR4, thereby inducing a conformational change that allows the transmembrane (TM) gp41 subunit to mediate fusion between viral and target cell membranes. Cleavage of Env into its gp120 and gp41 components is necessary for activation of its fusogenic activity.
Note:	gp120 antibody can be used for Western blot at 1 - 2 µg/mL.



[View online »](#)

## Product images:



Western blot analysis 1 ng of recombinant gp120 with gp120 antibody at 1 ug/mL.