

Product datasheet for **TA160096**

NS1 Rabbit Polyclonal Antibody

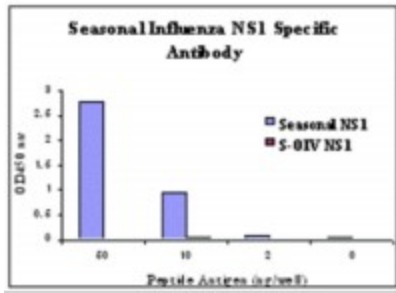
Product data:

Product Type:	Primary Antibodies
Applications:	ELISA
Recommended Dilution:	ELISA 1:100 - 1:1000
Reactivity:	Influenza A Virus
Host:	Rabbit
Isotype:	IgG
Clonality:	Polyclonal
Immunogen:	NS1 antibody was raised against a synthetic peptide from the seasonal Influenza NS1 protein.
Formulation:	PBS containing 0.02% sodium azide.
Concentration:	1 mg/ml
Purification:	Purified from mouse ascites fluids or tissue culture supernatant by affinity chromatography (protein A/G)
Conjugation:	Unconjugated
Storage:	Store at -20°C as received.
Stability:	Stable for 12 months from date of receipt.
Database Link:	A4U724
Background:	Seasonal H1N1 Nonstructural Protein 1 Antibody: Influenza A virus is a major public health threat, killing more than 30, 000 people per year in the USA. In early 2009, a novel swine-origin influenza A (H1N1) virus (S-OIV) was identified in specimens obtained from patients in Mexico and the United States. One of the less studied proteins encoded by, but not incorporated in, the influenza virus is the nonstructural protein (NS) 1. NS1 counters cellular antiviral activities and acts as a virulence factor. It can bind to double-stranded RNA and sequester it from 2'-5'OAS, preventing the activation of the RNase L, which normally acts to degrade RNA and prevent virus replication. NS1 also binds to and inhibits the anti-viral protein kinase PKR.



[View online »](#)

Product images:



ELISA results using Seasonal H1N1 Nonstructural Protein 1 antibody at 1 ug/mL and the blocking and corresponding peptides at 60, 10, 2 and 0 ng/mL.