

Product datasheet for **TA160091**

HA Rabbit Polyclonal Antibody

Product data:

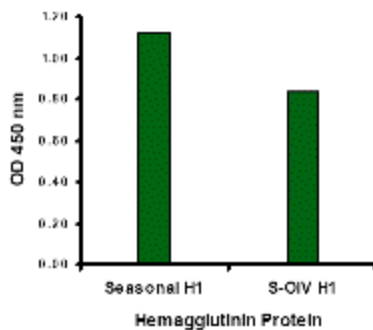
Product Type:	Primary Antibodies
Applications:	ELISA
Recommended Dilution:	ELISA: 1 ug/mL
Reactivity:	Influenza A Virus
Host:	Rabbit
Isotype:	IgG
Clonality:	Polyclonal
Immunogen:	Hemagglutinin antibody was raised against a synthetic peptide from the Hemagglutinin protein. The peptide sequence is unique from the peptide sequence for product 5231, and 5235. This antibody is a cognate pair with product number 5241.
Formulation:	PBS containing 0.02% sodium azide.
Concentration:	1 mg/ml
Purification:	Purified from mouse ascites fluids or tissue culture supernatant by affinity chromatography (protein A/G)
Conjugation:	Unconjugated
Storage:	Store at -20°C as received.
Stability:	Stable for 12 months from date of receipt.



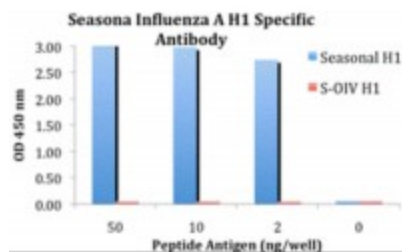
[View online »](#)

Background:

Seasonal H1N1 Hemagglutinin Antibody: Influenza A virus is a major public health threat, killing more than 30,000 people per year in the USA. In early 2009, a novel swine-origin influenza A (H1N1) virus was identified in specimens obtained from patients in Mexico and the United States. The virus spread quickly around the world and on June 11, 2009, the World Health Organization declared it a pandemic. Influenza A virus has one of sixteen possible Hemagglutinin (HA) surface proteins and one of nine possible Neuraminidase (NA) surface proteins. The Hemagglutinin protein facilitates viral attachment while Neuraminidase is involved in viral release. These proteins also elicit immune responses that prevent infection or independently reduce viral replication. The genetic make-up of this swine flu virus is unlike any other: it is an H1N1 strain that combines a triple assortment first identified in 1998 including human, swine, and avian influenza with two new pig H3N2 virus genes from Eurasia, themselves of recent human origin. The distinct antigenic properties of the new swine influenza virus compared with seasonal influenza A (H1N1) virus suggest that human immunity against new swine influenza virus is limited, although the age distribution of reported cases suggests some degree of protection in older age groups.

Product images:


Seasonal Influenza A Hemagglutinin antibody (2 ug/mL) recognizes seasonal influenza A (H1N1), and to a lesser extent swine-origin influenza A (S-OIV, H1N1), Hemagglutinin protein in ELISA.



ELISA results using Seasonal H1N1 Hemagglutinin antibody at 1 ug/mL and the blocking and corresponding peptides at 50, 10, 2 and 0 ng/mL.