

Product datasheet for **TA160086**

lacZ Chicken Polyclonal Antibody

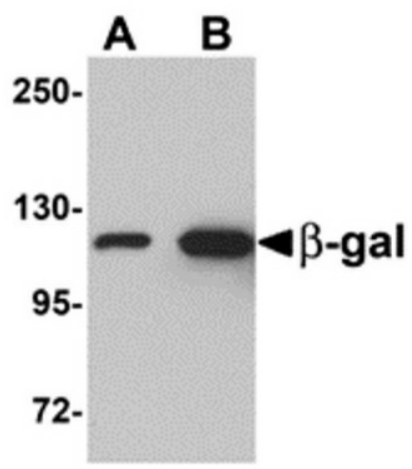
Product data:

Product Type:	Primary Antibodies
Applications:	WB
Recommended Dilution:	WB: 1 ug/mL
Reactivity:	Bacteria
Host:	Chicken
Isotype:	IgY
Clonality:	Polyclonal
Immunogen:	beta-gal antibody was raised against a 17 amino acid synthetic peptide from near the amino terminus of <i>E. coli</i> beta-gal.
Formulation:	PBS containing 0.02% sodium azide.
Concentration:	1 mg/ml
Purification:	Purified from mouse ascites fluids or tissue culture supernatant by affinity chromatography (protein A/G)
Conjugation:	Unconjugated
Storage:	Store at -20°C as received.
Stability:	Stable for 12 months from date of receipt.
Background:	beta-Galactosidase Antibody: Beta-galactosidase (beta-gal), an inducible enzyme that catalyses the hydrolysis of lactose and other beta-galactosides into monosaccharides, is a product of the LacZ operon, and is a homo-tetrameric protein consisting of four identical subunits of approximately 114 kDa each. The enzyme is commonly used as a reporter gene in molecular biology to assess the efficiency of transfection.



[View online »](#)

Product images:



Western blot analysis of (A) 5 and (B) 25 ng of b-gal with b-gal antibody at 1 ug/mL.