

## Product datasheet for **TA160083**

### env Rabbit Polyclonal Antibody

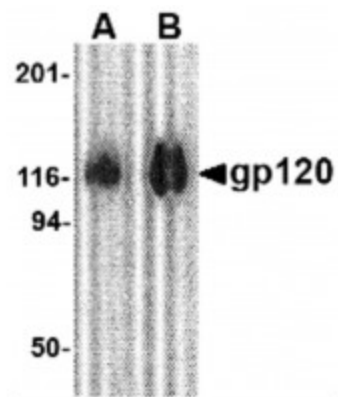
#### Product data:

Product Type:	Primary Antibodies
Applications:	WB
Recommended Dilution:	WB: 0.5 - 1 ug/mL
Reactivity:	Human Immunodeficiency Virus 1
Host:	Rabbit
Isotype:	IgG
Clonality:	Polyclonal
Immunogen:	gp120 antibody was raised against 16 amino acid synthetic peptide representing the major HIV-1 consensus sequence near the N-terminal region of V1/V2 loop.
Formulation:	PBS containing 0.02% sodium azide.
Concentration:	1 mg/ml
Purification:	Purified from mouse ascites fluids or tissue culture supernatant by affinity chromatography (protein A/G)
Conjugation:	Unconjugated
Storage:	Store at -20°C as received.
Stability:	Stable for 12 months from date of receipt.
Background:	gp120 Antibody: Human immunodeficiency virus type 1 (HIV-1) entry into target cells is directed by the envelope (Env) glycoproteins, which are present on the surface of HIV-1 virion or infected cells in the form of trimers consisting of gp120/gp41 complexes. The surface subunit, gp120, initiates the entry process by interacting sequentially with the CD4 receptor and a co-receptor CCR5 or CXCR4, thereby inducing a conformational change that allows the transmembrane (TM) gp41 subunit to mediate fusion between viral and target cell membranes. Cleavage of Env into its gp120 and gp41 components is necessary for activation of its fusogenic activity.



[View online »](#)

## Product images:



Western blot analysis of 1 ug of gp120 with gp120 antibody at (A) 0.5 and (B) 1 ug/mL.