

## Product datasheet for **TA160075**

### **PST1 Rabbit Polyclonal Antibody**

#### **Product data:**

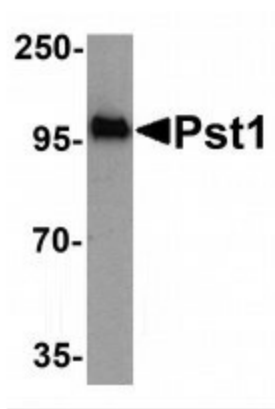
Product Type:	Primary Antibodies
Applications:	WB
Recommended Dilution:	ELISA: 1 ug/mL, WB: 1 ug/mL
Reactivity:	Yeast
Host:	Rabbit
Isotype:	IgG
Clonality:	Polyclonal
Immunogen:	Pst1 antibody was raised against a synthetic peptide from the amino terminus of yeast Pst1.
Formulation:	PBS containing 0.02% sodium azide.
Concentration:	1 mg/ml
Purification:	Purified from mouse ascites fluids or tissue culture supernatant by affinity chromatography (protein A/G)
Conjugation:	Unconjugated
Storage:	Store at -20°C as received.
Stability:	Stable for 12 months from date of receipt.
Database Link:	<a href="#">Q12355</a>



[View online »](#)

**Background:**

Pst1 Antibody: Protoplast secreted protein 1 (Pst1) is an anchored plasma membrane protein. Pst1 was previously identified as a protein secreted by yeast regenerating protoplasts, which suggests a role in cell wall construction. Pst1 is a protein with 444 amino acids and is attached to yeast cell wall via a glycosylphosphatidylinositol (GPI) anchor. Pst1 contains 15 potential N-linked glycosylation sites and is heavily glycosylated. It migrates at approximately 200 kDa on SDS-PAGE when produced in wild type *S. cerevisiae*. Our Pst1 protein (Catalog No. 95-151) was expressed in a genetically manipulated triple-mutant (TM) *S. cerevisiae* strain ( $\Delta och1 \Delta mnn1 \Delta mnn4$ ), which results in the production of sole Man<sub>8</sub>GlcNAc<sub>2</sub> carbohydrate structures and Pst1 migration at approximately 100 kDa. When produced in the TM yeast, Pst1 can be recognized by several glycan-specific HIV-1 broadly neutralizing antibodies, including 2G12 and recently identified PGT antibodies. Among several heavily N-glycosylated TM yeast glycoproteins, Pst1 shows higher affinity for 2G12 and efficiently inhibits gp120 interactions with 2G12 and DC-SIGN, and it also blocks 2G12-mediated neutralization of HIV-1 pseudoviruses.

**Product images:**


Western blot analysis of TM yeast Pst1 protein (50 ng) with Pst1 antibody at 1 ug/mL.