

## Product datasheet for **TA160066**

### nonstructural protein NS5 Rabbit Polyclonal Antibody

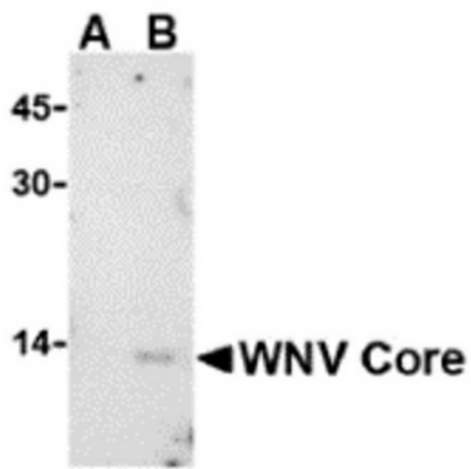
#### Product data:

Product Type:	Primary Antibodies
Applications:	IF, WB
Recommended Dilution:	ELISA: 1 ug/mL, WB: 1 ug/mL, ICC: 20 ug/mL
Reactivity:	West Nile Virus
Host:	Rabbit
Isotype:	IgG
Clonality:	Polyclonal
Immunogen:	West Nile Virus Core antibody was raised against a synthetic peptide corresponding to 15 amino acids near the carboxy terminus of the West Nile Virus core protein.
Formulation:	PBS containing 0.02% sodium azide.
Concentration:	1 mg/ml
Purification:	Purified from mouse ascites fluids or tissue culture supernatant by affinity chromatography (protein A/G)
Conjugation:	Unconjugated
Storage:	Store at -20°C as received.
Stability:	Stable for 12 months from date of receipt.
Database Link:	<a href="#">NP_776011</a> <a href="#">P06935</a>
Background:	West Nile Virus Core Antibody: West Nile Virus (WNV) is a member of the Flaviviridae, a plus-stranded virus family that includes St. Louis encephalitis virus, yellow fever virus, and Dengue virus. WNV was initially isolated in 1937 in the West Nile region of Uganda and has become prevalent in Africa, Asia, and Europe. It has rapidly spread across the United States with cases being observed in every continental state. Virus particles consist of a dense core made up of the core/capsid protein encapsulating the RNA genome surrounded by a membrane envelope embedded with envelope and matrix proteins which play a major role for WNV entry into target cells. The viral core protein is thought to contribute to the WNV-associated inflammation via apoptosis induced through the caspase-9 pathway as delivery of core gene delivery into the striatum of mouse brain and skeletal muscle resulted in cell death and inflammation.

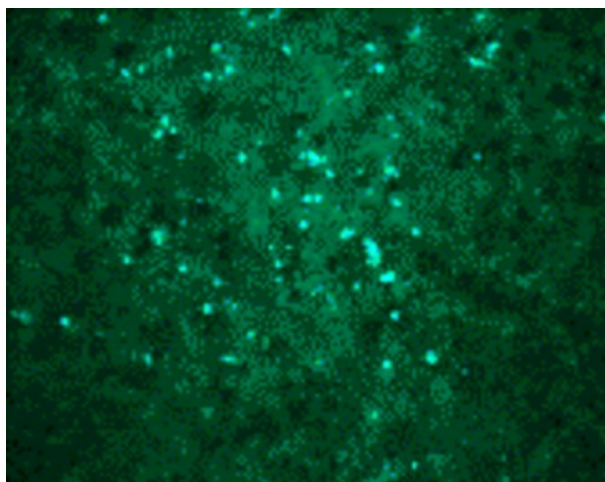


[View online »](#)

## Product images:



Western blot analysis of WNV Core in (A) untransfected or (B) transfected HeLa lysate with WNV Core antibody at 1 ug/mL.



Immunocytochemical staining of transfected Vero cells using WNV Core antibody at 20 ug/mL.