

Product datasheet for **TA160052**

SARS-CoV-2/SARS-CoV Spike Protein Rabbit Polyclonal Antibody

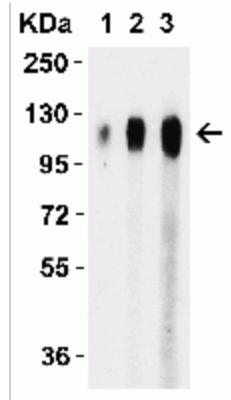
Product data:

Product Type:	Primary Antibodies
Applications:	E, WB
Recommended Dilution:	ELISA: the antibody will detect 2 ng of free peptide at 1 µg/ml. SARS-CoV-2/SARS-CoV Spike antibody can be used for the detection of SARS-CoV-2/SARS-CoV Spike protein in ELISA and in Western Blot.
Reactivity:	SARS-CoV, SARS-CoV-2
Host:	Rabbit
Isotype:	IgG
Clonality:	Polyclonal
Immunogen:	SARS-CoV-2 Spike protein antibody was raised against a peptide corresponding to 17 amino acids within aa 410-460 near the center of SARS-CoV Spike glycoprotein. Predicted reactivity based on immunogen sequence: SARS-CoV-2 Spike protein: (identity 65%, homology 88%). Has been shown to react with SARS-CoV-2 protein (see QC images).
Formulation:	PBS containing 0.02% sodium azide.
Concentration:	1 mg/ml
Purification:	Purified from mouse ascites fluids or tissue culture supernatant by affinity chromatography (protein A/G)
Conjugation:	Unconjugated
Storage:	Store at -20°C as received.
Stability:	Stable for 12 months from date of receipt.
Database Link:	P59594
Background:	SARS Spike Antibody: A novel coronavirus has recently been identified as the causative agent of SARS (Severe Acute Respiratory Syndrome). Coronaviruses are a major cause of upper respiratory diseases in humans. The genomes of these viruses are positive-stranded RNA approximately 27-31kb in length. SARS infection can be mediated by the binding of the viral spike protein, a glycosylated 139 kDa protein and the major surface antigen of the virus, to the angiotensin-converting enzyme 2 (ACE2) on target cells. This binding can be blocked by a soluble form of ACE2.



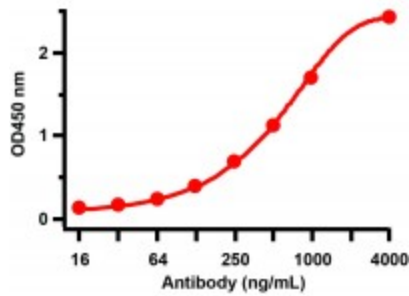
[View online »](#)

Product images:



Western Blot Validation with Human Recombinant Protein

Loading: 50 ng per lane of human SARS-CoV-2 Spike S1 recombinant protein. Antibodies: SARS-CoV-2/SARS-CoV Spike, 1h incubation at RT in 5% NFDM/TBST. Secondary: Goat anti-rabbit IgG HRP conjugate at 1:10000 dilution. Lane 1: 1 µg/mL Lane 2: 2 µg/mL Lane 3: 4 µg/mL.



ELISA Validation with Human Recombinant Protein

Antibodies: SARS-CoV-2 Spike antibody, TA160052. An ELISA was performed using human SARS-CoV-2 Spike S1 recombinant protein as coating antigen and the SARS-CoV-2 Spike antibody, as the capture antibody. Secondary: Goat anti-rabbit IgG HRP conjugate at 1:20000 dilution. Detection range is from 16 ng/mL to 4000 ng/mL.