

Product datasheet for **TA160042**

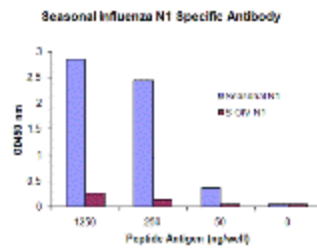
NA Mouse Monoclonal Antibody [Clone ID: 10C5F12]

Product data:

Product Type:	Primary Antibodies
Clone Name:	10C5F12
Applications:	ELISA
Recommended Dilution:	ELISA: 1 ug/mL
Reactivity:	Influenza A Virus
Host:	Mouse
Isotype:	IgG2b
Clonality:	Monoclonal
Immunogen:	Mouse monoclonal neuraminidase antibody was raised against a synthetic peptide from the seasonal influenza (H1N1) neuraminidase protein.
Formulation:	PBS containing 0.02% sodium azide.
Concentration:	1 mg/ml
Purification:	Purified from mouse ascites fluids or tissue culture supernatant by affinity chromatography (protein A/G)
Conjugation:	Unconjugated
Storage:	Store at -20°C as received.
Stability:	Stable for 12 months from date of receipt.
Background:	Seasonal H1N1 Neuraminidase Monoclonal Antibody: Influenza A virus has one of sixteen possible hemagglutinin (HA) surface proteins and one of nine possible neuraminidase (NA) surface proteins. In early 2009, a novel H1N1 swine-origin influenza (S-OIV) A virus was identified in specimens obtained from patients in Mexico and the United States. The genetic make-up of this swine flu virus is unlike any other: it is an H1N1 strain that combines a triple assortment first identified in 1998 including human, swine, and avian influenza with two new pig H3N2 virus genes from Eurasia, themselves of recent human origin.



[View online »](#)

Product images:

Seasonal influenza A N1 antibody specifically recognizes seasonal (H1N1) N1, and does not cross-react with peptide corresponding to swine-origin influenza A (S-OIV, H1N1) N1 peptide, in ELISA.