

Product datasheet for **TA160030**

Flp Rabbit Polyclonal Antibody

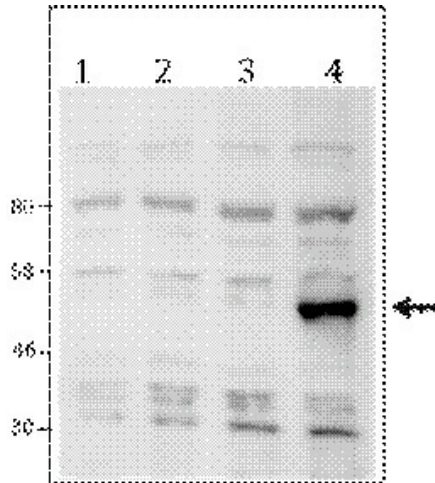
Product data:

Product Type:	Primary Antibodies
Applications:	ELISA, WB
Recommended Dilution:	ELISA (1:50); Western blotting (1:500)
Host:	Rabbit
Isotype:	IgG
Clonality:	Polyclonal
Immunogen:	The immunogen for anti-Flp antibody: Flp recombinase using 3 KLH-conjugated synthetic peptides located at the N-terminal part of the protein
Concentration:	Not Determined
Purification:	Whole antiserum from rabbit containing 0.05% azide.
Conjugation:	Unconjugated
Storage:	Store at -20°C as received.
Stability:	Stable for 12 months from date of receipt.
Background:	Flp recombinase originates from <i>Saccharomyces cerevisiae</i> and recognizes FRT sites in the genome. It catalyzes recombination between two FRT sites, thereby excising the intervening DNA sequence. Flp recombinase is used as a tool for the generation of transgenic animals.

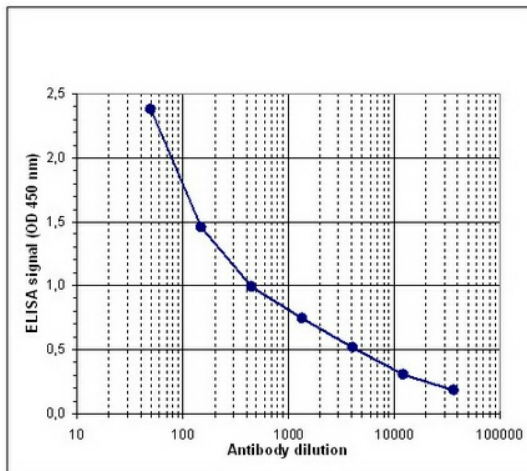


[View online »](#)

Product images:



WB was performed on whole cell lysates from untransfected 293 cells (lane 1), or 293 cells transfected with Cre (lane 2), Dre (lane 3) or Flp (lane 4) with the antibody against Flp, diluted 1:500 in BSA/PBS-Tween. The molecular weight marker (in KD) is shown on the left; the location of the protein of interest (expected size: 48 KD) is indicated on the right.



Determination of the titer To determine the titer, an ELISA was performed using a serial dilution of the antibody against Flp in antigen coated wells. By plotting the absorbance against the antibody dilution (Figure 1), the titer of the antibody was estimated to be 1:2,000.