

Product datasheet for **TA160029**

Dre Rabbit Polyclonal Antibody

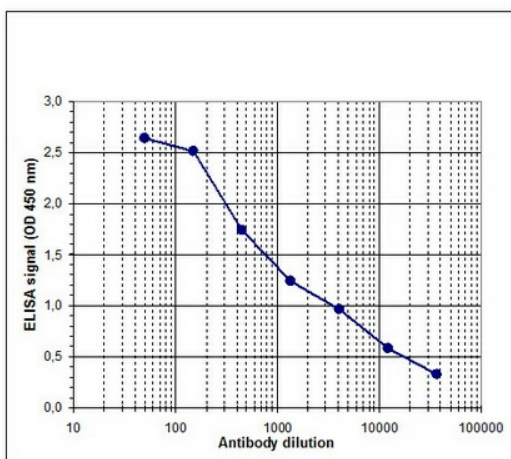
Product data:

Product Type:	Primary Antibodies
Applications:	ELISA
Recommended Dilution:	ELISA (1:100) ; Western blotting (1:500)
Host:	Rabbit
Isotype:	IgG
Clonality:	Polyclonal
Immunogen:	The immunogen for anti-Dre antibody: Dre recombinase using a KLH-conjugated synthetic peptide located at the C-terminal part of the protein
Concentration:	lot specific
Purification:	Purified from mouse ascites fluids or tissue culture supernatant by affinity chromatography (protein A/G)
Conjugation:	Unconjugated
Storage:	Store at -20°C as received.
Stability:	Stable for 12 months from date of receipt.
Background:	Dre recombinase originates from bacteriophage D6 and recognizes rox sites in the genome. It catalyzes recombination between two rox sites, thereby excising the intervening DNA sequence. Dre recombinase is used as a tool for the generation of transgenic animals.



[View online »](#)

Product images:



To determine the titer, ELISA was performed using a serial dilution of the antibody in antigen coated wells. By plotting the absorbance against the antibody dilution, the titer of the antibody was estimated to be 1:1,850. WB was performed on whole cell lysates from untransfected 293 cells (lane 1), or 293 cells transfected with Cre (lane 2), Dre (lane 3) or Flp (lane 4) with the ab against Dre, diluted 1:500 in BSA/PBS-Tween. Expected size: 38 KD