

## Product datasheet for **TA160028**

### Cre Rabbit Polyclonal Antibody

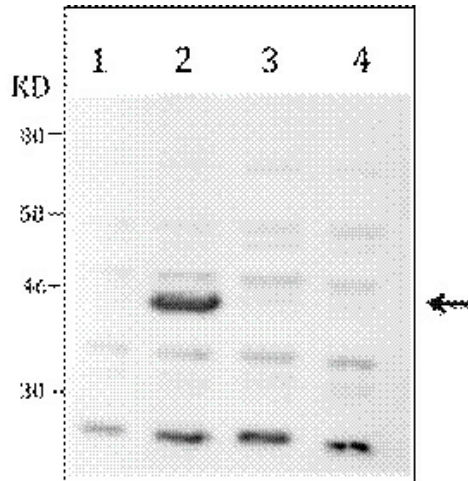
#### Product data:

Product Type:	Primary Antibodies
Applications:	ELISA, WB
Recommended Dilution:	ELISA (1:100); Western blotting (1:500)
Host:	Rabbit
Isotype:	IgG
Clonality:	Polyclonal
Immunogen:	The immunogen for anti-Cre antibody: Cre recombinase using a KLH-conjugated synthetic peptide located at the C-terminal part of the protein
Concentration:	lot specific
Purification:	Purified from mouse ascites fluids or tissue culture supernatant by affinity chromatography (protein A/G)
Conjugation:	Unconjugated
Storage:	Store at -20°C as received.
Stability:	Stable for 12 months from date of receipt.
Background:	Cre recombinase originates from bacteriophage P1 and recognizes loxP sites in the genome. It catalyzes recombination between two loxP sites, thereby excising the intervening DNA sequence. Cre recombinase is used as a tool for the generation of transgenic animals.

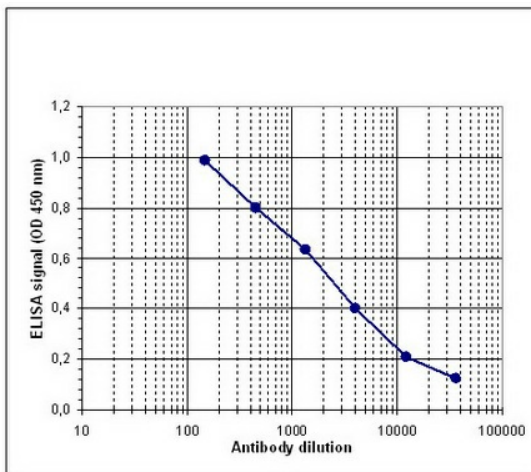


[View online »](#)

Product images:



WB was performed on whole cell lysates from untransfected 293 cells (lane 1), or 293 cells transfected with Cre (lane 2), Dre (lane 3) or Flp (lane 4) with the antibody against Cre, diluted 1:500 in BSA/PBS-Tween. The molecular weight marker (in KD) is shown on the left; the location of the protein of interest (expected size: 38 KD) is indicated on the right.



Determination of the titer To determine the titer, an ELISA was performed using a serial dilution of the antibody against Cre in antigen coated wells. By plotting the absorbance against the antibody dilution (Figure 1), the titer of the antibody was estimated to be 1:2,900.