

## Product datasheet for **TA160023**

### Acetylated -Lysine Rabbit Monoclonal Antibody [Clone ID: RM101]

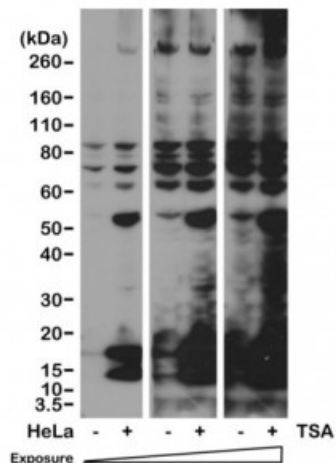
#### Product data:

Product Type:	Primary Antibodies
Clone Name:	RM101
Applications:	IHC, WB
Recommended Dilution:	WB: 1:500 -1:2000, IP: 1:100-1:500, CHIP: 1:100-1:500, ICC: 1:100-1:500, IHC: 1:100-1:500
Reactivity:	All Species
Host:	Rabbit
Isotype:	IgG
Clonality:	Monoclonal
Immunogen:	Acetyllysine -BSA
Formulation:	PBS with 1% BSA and 0.09% sodium azide
Purification:	Purified from mouse ascites fluids or tissue culture supernatant by affinity chromatography (protein A/G)
Conjugation:	Unconjugated
Storage:	Store at -20°C as received.
Stability:	Stable for 12 months from date of receipt.
Note:	RM101 reacts to lysine-acetylated proteins. No cross reactivity with nonac

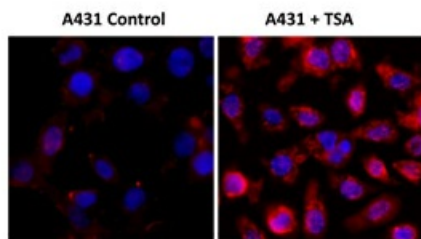


[View online »](#)

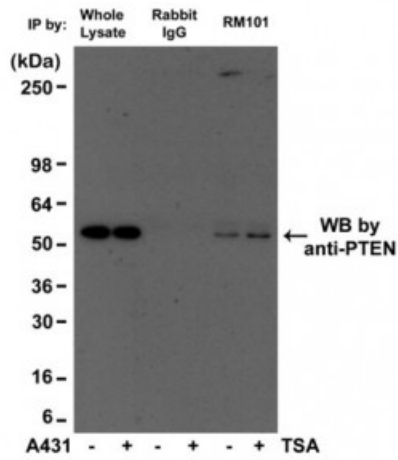
Product images:



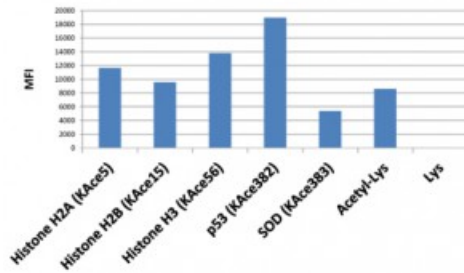
Western blot of HeLa cells nontreated or treated with Trichostatin A (TSA), using anti-Acetylated -Lysine antibody at 1/2000 dilution.



Immunocytochemistry of A431 cells nontreated or treated with Trichostatin A (TSA), using anti-Acetylated -Lysine antibody at 1/500 dilution (followed by a PE conjugated secondary antibody, red) and DAPI (blue).



Immunoprecipitation of A431 cell lysates, by anti-Acetylated -Lysine antibody at 1/500 dilution, was blotted with anti-PTEN mouse monoclonal antibody.



Anti-Acetylated -Lysine antibody recognizes acetylated lysine in peptides with different sequences. It does not react with non-acetylated lysine.