

Product datasheet for **TA160022**

Phosphotyrosine Rabbit Monoclonal Antibody [Clone ID: RM111]

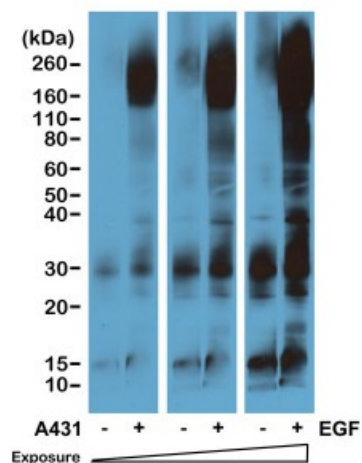
Product data:

Product Type:	Primary Antibodies
Clone Name:	RM111
Applications:	IHC, LMNX, WB
Recommended Dilution:	WB: 1:1000 -1:5000, IP: 1:200-1:1000, ChIP: 1:200-1:1000, ICC: 1:200-1:500, IHC: 1:200-1:500
Reactivity:	All Species
Host:	Rabbit
Isotype:	IgG
Clonality:	Monoclonal
Immunogen:	Phosphotyrosine-BSA conjugate
Formulation:	PBS with 1% BSA and 0.09% sodium azide
Purification:	Purified from mouse ascites fluids or tissue culture supernatant by affinity chromatography (protein A/G)
Conjugation:	Unconjugated
Storage:	Store at -20°C as received.
Stability:	Stable for 12 months from date of receipt.
Note:	RM111 reacts to tyrosine-phosphorylated proteins. No cross reactivity with

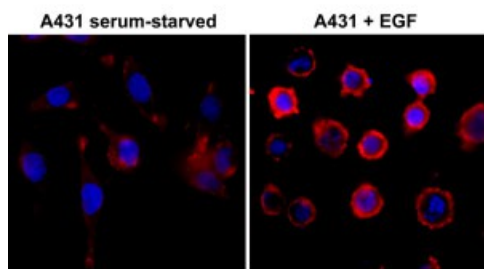


[View online »](#)

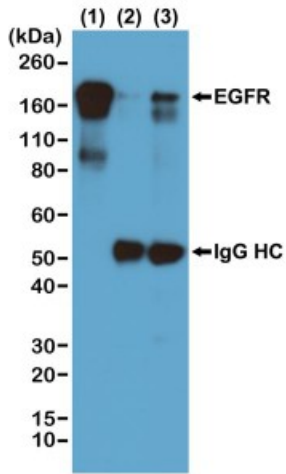
Product images:



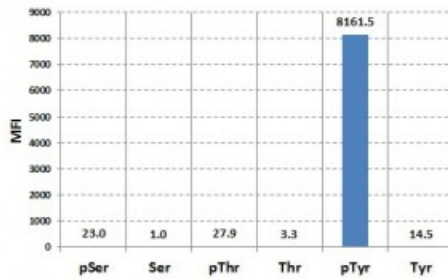
Western blot of serum-starved A431 cells nontreated or treated with EGF, using anti-Phosphotyrosine antibody at 1/5000 dilution. The blot was exposed to films at different time points.



Immunocytochemistry of serum-starved A431 cells nontreated or treated with EGF, using anti-Phosphotyrosine antibody at 1/500 dilution (followed by a PE conjugated secondary antibody, red) and DAPI (blue).



Immunoprecipitation of EGF-treated A431 cells by anti-Phosphotyrosine antibody at 1/1000 dilution, was blotted with an anti-EGFR rabbit monoclonal antibody. (1) whole lysate control; (2) IP by rabbit IgG control; (3) IP by anti-Phosphotyrosine antibody



Luminex analysis of anti-Phosphotyrosine antibody reaction to phosphorylated or nonphosphorylated Serine, Threonine, and Tyrosine. Anti-Phosphotyrosine antibody only reacted to phosphorylated Tyrosine