

Product datasheet for **TA160014**

Acetyl-Histone H3 (Lys18) Rabbit Monoclonal Antibody [Clone ID: RM166]

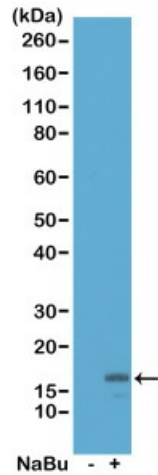
Product data:

Product Type:	Primary Antibodies
Clone Name:	RM166
Applications:	WB
Recommended Dilution:	WB: 0.5 ug/mL - 2 ug/mL;; ELISA: 0.2 ug/mL - 1 ug/mL;; Multiplex: 0.1 ug/mL - 0.5 ug/mL.
Reactivity:	All Species
Host:	Rabbit
Isotype:	IgG
Clonality:	Monoclonal
Immunogen:	An acetyl-peptide corresponding to the Acetyl-Histone H3 (Lys18).
Formulation:	PBS with 1% BSA and 0.09% sodium azide
Purification:	Purified from mouse ascites fluids or tissue culture supernatant by affinity chromatography (protein A/G)
Conjugation:	Unconjugated
Storage:	Store at -20°C as received.
Stability:	Stable for 12 months from date of receipt.
Note:	RM166 reacts to Histone H3 acetylated at Lysine 18 (K18ac). No cross react

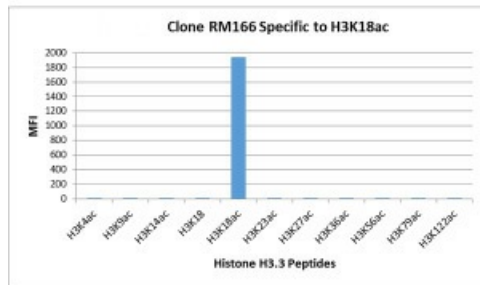


[View online »](#)

Product images:



Western Blot of acid extracts from HeLa cells untreated (-) or treated (+) with sodium butyrate, using anti-H3K18ac antibody at 0.5 ug/mL, showed a band of histone H3 acetylated at Lysine 18 in treated HeLa.



Anti-H3K18ac antibody specifically reacts to Histone H3 acetylated at Lysine 18 (K18ac). No cross reactivity with acetylated Lysine 4 (K4ac), Lysine 9 (K9ac), Lysine 14 (K14ac), Lysine 23 (K23ac), Lysine 27 (K27ac), Lysine 36 (K36ac), Lysine 56 (K56ac), I