

## Product datasheet for **TA160011**

### Acetyl-Histone H3 (Lys36) Rabbit Monoclonal Antibody [Clone ID: RM154]

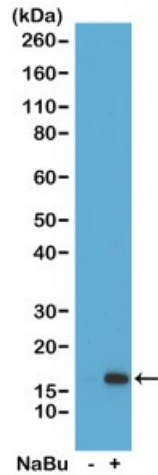
#### Product data:

Product Type:	Primary Antibodies
Clone Name:	RM154
Applications:	WB
Recommended Dilution:	WB: 0.5 ug/mL - 2 ug/mL;; ELISA: 0.2 ug/mL - 1 ug/mL;; Multiplex: 0.1 ug/mL - 0.5 ug/mL.
Reactivity:	All Species
Host:	Rabbit
Isotype:	IgG
Clonality:	Monoclonal
Immunogen:	An acetyl-peptide corresponding to the Acetyl-Histone H3 (Lys36).
Formulation:	PBS with 1% BSA and 0.09% sodium azide
Purification:	Purified from mouse ascites fluids or tissue culture supernatant by affinity chromatography (protein A/G)
Conjugation:	Unconjugated
Storage:	Store at -20°C as received.
Stability:	Stable for 12 months from date of receipt.
Note:	RM154 reacts to Histone H3 acetylated at Lysine 36 (K36ac), and is not aff

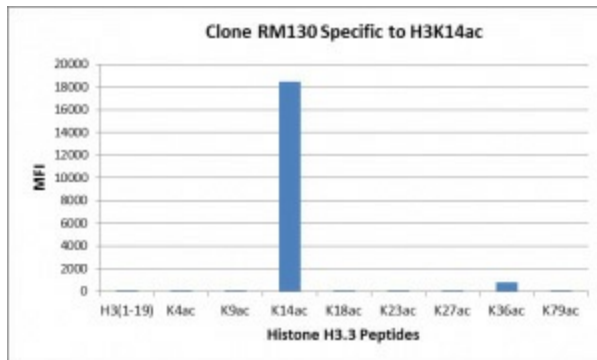


[View online »](#)

Product images:



Western Blot of acid extracts from HeLa cells untreated (-) or treated with sodium butyrate (+), using anti-H3K36ac antibody at 1 ug/mL, showed a band of histone H3 acetylated at Lysine 36 in treated HeLa.



Anti-H3K36ac antibody specifically reacts to Histone H3 acetylated at Lysine 36 (K36ac), and is not affected by the phosphorylation of neighboring Ser31. No cross reactivity with acetylated Lysine 4 (K4ac), Lysine 9 (K9ac), Lysine 14 (K14ac), Lysine 18 (K