

Product datasheet for **TA160009**

Dimethyl-Histone H3 (Lys36) Rabbit Monoclonal Antibody [Clone ID: RM141]

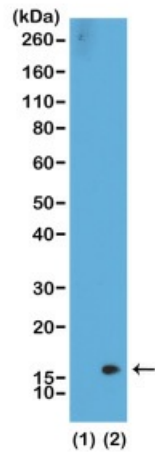
Product data:

Product Type:	Primary Antibodies
Clone Name:	RM141
Applications:	WB
Recommended Dilution:	WB: 0.5 ug/mL - 2 ug/mL;; ELISA: 0.2 ug/mL - 1 ug/mL;; Multiplex: 0.1 ug/mL - 0.5 ug/mL.
Reactivity:	All Species
Host:	Rabbit
Isotype:	IgG
Clonality:	Monoclonal
Immunogen:	A dimethyl-peptide corresponding to Dimethyl-Histone H3 (Lys36).
Formulation:	PBS with 1% BSA and 0.09% sodium azide
Purification:	Purified from mouse ascites fluids or tissue culture supernatant by affinity chromatography (protein A/G)
Conjugation:	Unconjugated
Storage:	Store at -20°C as received.
Stability:	Stable for 12 months from date of receipt.
Note:	RM141 reacts to Histone H3 dimethylated at Lysine 36 (K36me2). No cross re

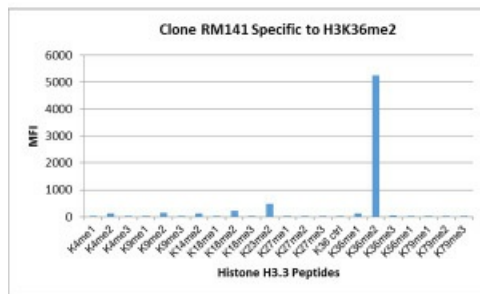


[View online »](#)

Product images:



Western Blot of recombinant histone H3.3 (1) and acid extracts of HeLa cells (2), using anti-H3K36me2 antibody at 0.5 ug/mL, showed a band of histone H3 dimethylated at Lysine 36 (K36me2) in HeLa cells.



Anti-H3K36me2 antibody specifically reacts to Histone H3 dimethylated at Lysine 36 (K36me2). No cross reactivity with non-modified Lysine 36 (K36 Ctrl), monomethylated Lysine 36 (K36me1), trimethylated Lysine 36 (K36me3), or other methylations in Histone