

Product datasheet for **TA160008**

Monomethyl-Histone H3 (Lys4) Rabbit Monoclonal Antibody [Clone ID: RM140]

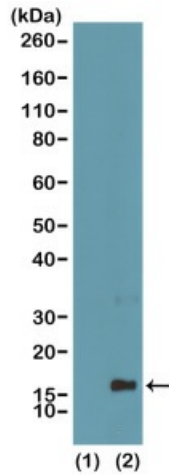
Product data:

Product Type:	Primary Antibodies
Clone Name:	RM140
Applications:	WB
Recommended Dilution:	WB: 0.2 ug/mL - 1 ug/mL;, ELISA: 0.2 ug/mL - 1 ug/mL;, Multiplex: 0.1 ug/mL - 0.5 ug/mL.
Reactivity:	All Species
Host:	Rabbit
Isotype:	IgG
Clonality:	Monoclonal
Immunogen:	A monomethyl-peptide corresponding to Monomethyl-Histone H3 (Lys4)
Formulation:	PBS with 1% BSA and 0.09% sodium azide
Purification:	Purified from mouse ascites fluids or tissue culture supernatant by affinity chromatography (protein A/G)
Conjugation:	Unconjugated
Storage:	Store at -20°C as received.
Stability:	Stable for 12 months from date of receipt.
Note:	RM140 reacts to Histone H3 monomethylated at Lysine 4 (K4me1). No cross re

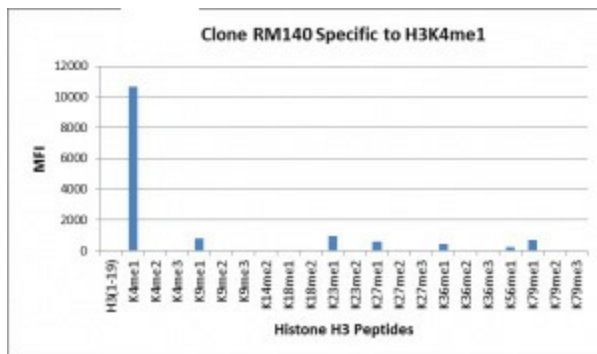


[View online »](#)

Product images:



Western Blot of recombinant histone H3.3 (1) and acid extracts of HeLa cells (2), using anti-H3K4me1 antibody at 0.5 ug/mL, showed a band of histone H3 monomethylated at Lysine 4 (K4me1) in HeLa cells.



Anti-H3K4me1 antibody specifically reacts to Histone H3 monomethylated at Lysine 4 (K4me1). No cross reactivity with dimethylated Lysine 4 (K4me2), trimethylated Lysine 4 (K4me3), or other methylations in histone H3