

Product datasheet for **TA160003**

Polyethylene Glycol Rabbit Monoclonal Antibody [Clone ID: RM105]

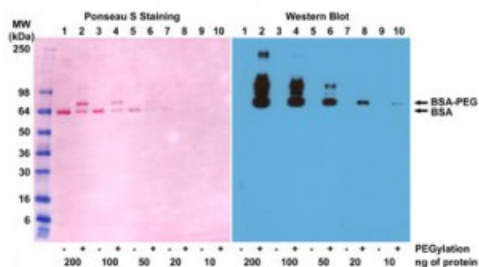
Product data:

Product Type:	Primary Antibodies
Clone Name:	RM105
Applications:	ELISA, IHC, WB
Recommended Dilution:	ELISA: 0.01 ug/mL-0.3 ug/mL, IHC: 0.5 ug/mL-2 ug/mL, WB : 0.05 ug/mL-1 ug/mL
Reactivity:	All Species
Host:	Rabbit
Isotype:	IgG
Clonality:	Monoclonal
Immunogen:	KLH-PEG with terminal methoxy group
Formulation:	PBS with 1% BSA and 0.09% sodium azide
Purification:	Purified from mouse ascites fluids or tissue culture supernatant by affinity chromatography (protein A/G)
Conjugation:	Unconjugated
Storage:	Store at -20°C as received.
Stability:	Stable for 12 months from date of receipt.
Note:	RM105 reacts to the methoxy group of Polyethylene glycol (PEG). It is spec

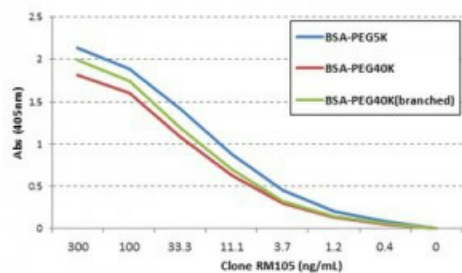


[View online »](#)

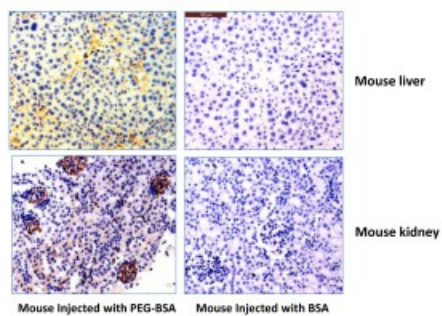
Product images:



Western blot of BSA and PEGylated BSA (mPEG 5 kDa) using 0.1ug/mL of anti-PEG antibody.



ELISA of three different PEGylated BSA using anti-PEG antibody, following AP conjugated goat anti-rabbit IgG



Immunohistochemistry of mouse liver and kidney using 0.5ug/mL of anti-PEG antibody. Mouse had been injected with PEG-BSA or BSA for 3 hours before sampling.