

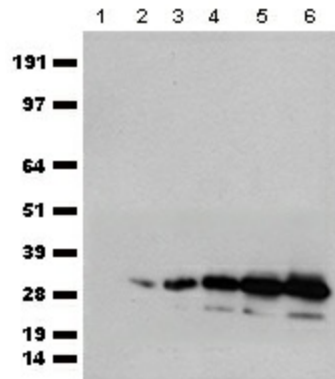
Product datasheet for TA150125

Rabbit Polyclonal mCherry Antibody

Product data:

Product Type:	Tag Antibodies
Product Name:	Rabbit Polyclonal mCherry Antibody
Applications:	WB
Recommended Dilution:	WB: 1:10000
Reactivity:	mCherry, mBanana, mOrange, mPlum, mStrawberry, tdTomato
Host:	Rabbit
Clonality:	Polyclonal
Immunogen:	mCherry
Isotype:	IgG
Formulation:	Preservative: 0.05% Sodium azide
Concentration:	This antibody is provided as whole antiserum. The exact antibody concentration is hard to determine.
Conjugation:	Unconjugated
Storage:	Store at -20°C. For maximum recovery of product, centrifuge the original vial after thawing and prior to opening the cap. Aliquot to avoid repeated freezing and thawing.
Stability:	Stable for 1 year at -20°C from date of shipment.

Product images:



HEK293T cells were transfected with the pCMV6-ENTRY mCherry cDNA and the cell lysates were collected after 48 hours. 0ug, 0.1ug, 0.2ug, 0.4ug, 0.8ug, 1.6ug of lysates (lane 1 to lane 6 respectively) were separated by SDS-PAGE and immunoblotted with Rabbit mCherry polyclonal antibody (TA150125) at 1:10000.



[View online >](#)