

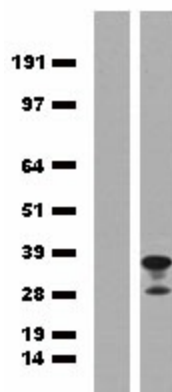
## Product datasheet for TA150098

### Goat Polyclonal mPlum Antibody

#### Product data:

Product Type:	Tag Antibodies
Product Name:	Goat Polyclonal mPlum Antibody
Applications:	WB
Recommended Dilution:	WB: 1:2000
Reactivity:	mPlum, mCherry, mOrange, tdTomato
Host:	Goat
Clonality:	Polyclonal
Immunogen:	Purified mPlum protein expressed in E. coli.
Isotype:	IgG
Formulation:	Whole antiserum. Preservative: 0.05% Sodium azide
Concentration:	This antibody is provided as whole antiserum. The exact antibody concentration is hard to determine.
Conjugation:	Unconjugated
Storage:	Store at -20°C. For maximum recovery of product, centrifuge the original vial after thawing and prior to opening the cap. Aliquot to avoid repeated freezing and thawing.
Stability:	Stable for 1 year at -20°C from date of shipment.

#### Product images:



HEK293T cells were transfected with the pCMV6-ENTRY control vector (left lane) or pCMV6-ENTRY mPlum (right lane) cDNA for 48 hrs and lysed. Equivalent amounts of cell lysates (5 ug per lane) were separated by SDS-PAGE and immunoblotted with Goat anti-mPlum polyclonal antibody ([TA150095]) (1:2000).



[View online »](#)