

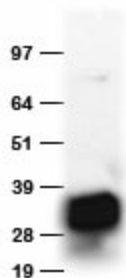
Product datasheet for TA150090

Anti-Dendra2 rabbit polyclonal antibody

Product data:

| | |
|-----------------------|---|
| Product Type: | Tag Antibodies |
| Product Name: | Anti-Dendra2 rabbit polyclonal antibody |
| Applications: | WB |
| Recommended Dilution: | WB:1:500-1:2000 |
| Target: | Dendra2 |
| Host: | Rabbit |
| Clonality: | Polyclonal |
| Immunogen: | Purified Dendra2 protein expressed in E. coli. |
| Isotype: | IgG |
| Formulation: | Whole antiserum. Preservative: 0.05% Sodium azide |
| Concentration: | This antibody is provided as whole antiserum. The exact antibody concentration is hard to determine. |
| Conjugation: | Unconjugated |
| Storage: | Store at -20°C. For maximum recovery of product, centrifuge the original vial after thawing and prior to opening the cap. Aliquot to avoid repeated freezing and thawing. |

Product images:



HEK293T cells were transfected with pCMV6-ENTRY Dendra2 cDNA. 20ug cell lysate was separated by SDS-PAGE and immunoblotted with rabbit anti-Dendra2 polyclonal antibody (TA150090, 1:2000)



[View online »](#)