

Product datasheet for **TA150087**

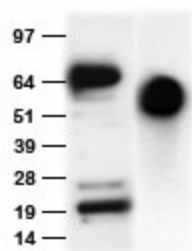
Anti-His tag rabbit polyclonal antibody

Product data:

Product Type:	Tag Antibodies
Product Name:	Anti-His tag rabbit polyclonal antibody
Applications:	WB
Recommended Dilution:	WB 1:500-1:2000
Reactivity:	His Tag
Host:	Rabbit
Clonality:	Polyclonal
Immunogen:	Synthetic peptide conjugated to KLH
Isotype:	IgG
Formulation:	Whole antiserum. Preservative: 0.05% Sodium azide
Concentration:	This antibody is provided as whole antiserum. The exact antibody concentration is hard to determine.
Conjugation:	Unconjugated
Storage:	Store at -20°C. For maximum recovery of product, centrifuge the original vial after thawing and prior to opening the cap. Aliquot to avoid repeated freezing and thawing.
Stability:	Stable for 1 year at -20°C from date of shipment.
Synonyms:	anti-His; Anti-His Antibody; anti-his tag; ANTI HIS; ANTIHIS; anti his tag; ANTI HISTIDINE; his antibody; his tag antibody



[View online »](#)

Product images:

Purified N-terminal His tag fused NAA20 protein ([TP760018], Left lane) and purified C-terminal His tag fused FGFR1 protein ([TP710236], right lane) were separated with SDS-PAGE gel and immunoblotted with rabbit anti-His tag polyclonal antibody (TA150087, 1:2000).