

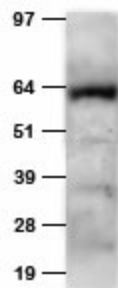
Product datasheet for TA150085

Anti-HA tag chicken polyclonal antibody

Product data:

Product Type:	Tag Antibodies
Product Name:	Anti-HA tag chicken polyclonal antibody
Applications:	WB
Recommended Dilution:	WB:1:500-1:2000
Target:	HA Tag
Host:	Chicken
Clonality:	Polyclonal
Immunogen:	Synthetic peptide (YPYDVPDYA) conjugated to KLH
Isotype:	IgY
Formulation:	1XPBS, pH 7.2 with 0.05% Sodium azide
Concentration:	1.0 mg/ml. Crude IgY preparation from egg yolks using a precipitation method (Polyethylene Glycol).
Conjugation:	Unconjugated
Storage:	Store at -20°C. For maximum recovery of product, centrifuge the original vial after thawing and prior to opening the cap. Aliquot to avoid repeated freezing and thawing.
Synonyms:	ANTI-HA; Anti-HA Antibody; Anti HA; Anti HA Antibody; ANTI INFLUENZA

Product images:



HEK293T cells transfected with NUP85 cDNA clone vector containing C-terminal HA tag were separated with SDS-PAGE gel and immunoblotted with chicken anti-HA tag polyclonal antibody (TA150085, 1:1000).



[View online »](#)