

Product datasheet for **TA150084**

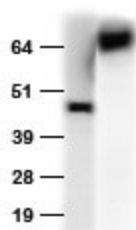
Anti-HA tag rabbit polyclonal antibody

Product data:

Product Type:	Tag Antibodies
Product Name:	Anti-HA tag rabbit polyclonal antibody
Applications:	WB
Recommended Dilution:	WB 1:500-1:2000
Reactivity:	HA Tag
Host:	Rabbit
Clonality:	Polyclonal
Immunogen:	Synthetic peptide conjugated to KLH
Isotype:	IgG
Formulation:	Whole antiserum. Preservative: 0.05% Sodium azide
Concentration:	This antibody is provided as whole antiserum. The exact antibody concentration is hard to determine.
Conjugation:	Unconjugated
Storage:	Store at -20°C. For maximum recovery of product, centrifuge the original vial after thawing and prior to opening the cap. Aliquot to avoid repeated freezing and thawing.
Stability:	Stable for 1 year at -20°C from date of shipment.
Synonyms:	ANTI-HA; Anti-HA Antibody; Anti HA; Anti HA Antibody; ANTI INFLUENZA



[View online »](#)

Product images:

HEK293T cells transfected with N-terminal HA tag PARD6B cDNA clone vector (Left lane) or with NUP85 cDNA clone vector containing C-terminal HA tag (right lane) were separated with SDS-PAGE gel and immunoblotted with rabbit anti-HA tag polyclonal antibody (TA150084, 1:7000).