

## Product datasheet for **TA150082**

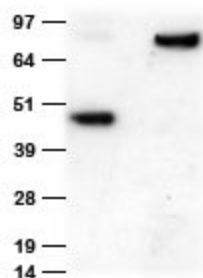
### Anti-MYC tag chicken polyclonal antibody

#### Product data:

Product Type:	Tag Antibodies
Product Name:	Anti-MYC tag chicken polyclonal antibody
Applications:	WB
Recommended Dilution:	WB 1:500-1:2000
Reactivity:	Myc Tag
Host:	Chicken
Clonality:	Polyclonal
Immunogen:	Synthetic peptide conjugated to KLH
Isotype:	IgY
Formulation:	1XPBS, pH 7.2 with 0.05% Sodium azide
Concentration:	1.0 mg/ml. Crude IgY preparation from egg yolks using a precipitation method (Polyethylene Glycol).
Conjugation:	Unconjugated
Storage:	Store at -20°C. For maximum recovery of product, centrifuge the original vial after thawing and prior to opening the cap. Aliquot to avoid repeated freezing and thawing.
Stability:	Stable for 1 year at -20°C from date of shipment.
Synonyms:	9E10 antibody; 9E10 anti myc; 9E10 myc; anti-Myc; anti-myc antibodies; Anti-myc Antibody; anti c-myc; anti cmc; anti myc; c-myc antibody; cmc antibody; myc antibody; tag antibody



[View online »](#)

**Product images:**

HEK293T cells transfected with N-terminal Myc tag TDO2 cDNA clone vector (Left lane) or with [RC209482] containing C-terminal Myc tag (right lane) were separated with SDS-PAGE gel and immunoblotted with chicken anti-Myc tag polyclonal antibody (TA150082, 1:1000).