

Product datasheet for **TA150081**

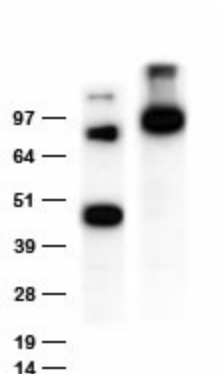
Anti-MYC tag rabbit polyclonal antibody

Product data:

Product Type:	Tag Antibodies
Product Name:	Anti-MYC tag rabbit polyclonal antibody
Applications:	WB
Recommended Dilution:	WB 1:5000-1:10,000
Reactivity:	Myc Tag
Host:	Rabbit
Clonality:	Polyclonal
Immunogen:	Synthetic peptide conjugated to KLH
Isotype:	IgG
Formulation:	Whole antiserum. Preservative: 0.05% Sodium azide
Concentration:	This antibody is provided as whole antiserum. The exact antibody concentration is hard to determine.
Conjugation:	Unconjugated
Storage:	Store at -20°C. For maximum recovery of product, centrifuge the original vial after thawing and prior to opening the cap. Aliquot to avoid repeated freezing and thawing.
Stability:	Stable for 1 year at -20°C from date of shipment.
Synonyms:	9E10 antibody; 9E10 anti myc; 9E10 myc; anti-Myc; anti-myc antibodies; Anti-myc Antibody; anti c-myc; anti cmyc; anti myc; c-myc antibody; cmyc antibody; myc antibody; tag antibody



[View online »](#)

Product images:

HEK293T cells transfected with N-terminal Myc tag TDO2 cDNA clone vector (Left lane) or with [RC209482] containing C-terminal Myc tag (right lane) were separated with SDS-PAGE gel and immunoblotted with rabbit anti-Myc tag polyclonal antibody (TA150081, 1:5000).