

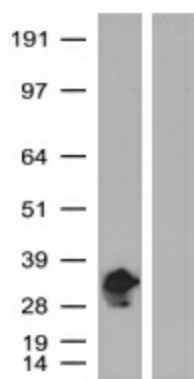
Product datasheet for TA150076

Chicken Polyclonal mKate Antibody

Product data:

Product Type:	Tag Antibodies
Product Name:	Chicken Polyclonal mKate Antibody
Applications:	WB
Recommended Dilution:	WB: 1:3000
Target:	mKate, mRFP, mBFP
Host:	Chicken
Clonality:	Polyclonal
Immunogen:	Purified mKate protein expressed in E. coli.
Isotype:	IgY
Formulation:	1XPBS, pH 7.2 with 0.05% Sodium azide
Concentration:	1.0 mg/ml. Crude IgY preparation from egg yolks using a precipitation method (Polyethylene Glycol).
Conjugation:	Unconjugated
Storage:	Store at -20°C. For maximum recovery of product, centrifuge the original vial after thawing and prior to opening the cap. Aliquot to avoid repeated freezing and thawing.

Product images:



HEK293T cells were transfected with the pCMV6-ENTRY mKate (left lane) cDNA or pCMV6-ENTRY control (right lane) for 48 hrs and lysed. Equivalent amounts of cell lysates (5 ug per lane) were separated by SDS-PAGE and immunoblotted with Chicken anti-mKate polyclonal antibody (TA150076) (1:3000).



[View online »](#)