

## Product datasheet for **TA150075**

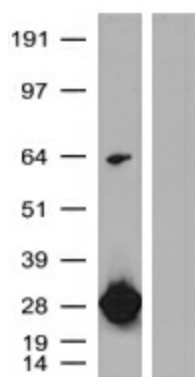
### Chicken Polyclonal turboGFP Antibody

#### Product data:

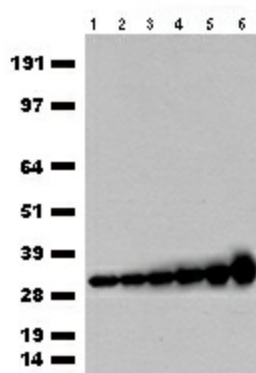
Product Type:	Tag Antibodies
Product Name:	Chicken Polyclonal turboGFP Antibody
Applications:	WB
Recommended Dilution:	WB: 1:3000
Reactivity:	tGFP
Host:	Chicken
Clonality:	Polyclonal
Immunogen:	Purified tGFP protein expressed in E. coli.
Isotype:	IgY
Formulation:	1XPBS, pH 7.2 with 0.05% Sodium azide
Concentration:	1.0 mg/ml. Crude IgY preparation from egg yolks using a precipitation method (Polyethylene Glycol).
Conjugation:	Unconjugated
Storage:	Store at -20°C. For maximum recovery of product, centrifuge the original vial after thawing and prior to opening the cap. Aliquot to avoid repeated freezing and thawing.
Stability:	Stable for 1 year at -20°C from date of shipment.



[View online »](#)

**Product images:**


HEK293T cells were transfected with the pCMV6-ENTRY turboGFP (left lane) cDNA or pCMV6-ENTRY control (right lane) for 48 hrs and lysed. Equivalent amounts of cell lysates (5 ug per lane) were separated by SDS-PAGE and immunoblotted with Chicken anti-turboGFP polyclonal antibody (TA150075) (1:3000).



HEK293T cells were transfected with the pCMV6-ENTRY turboGFP cDNA for 48 hrs and lysed. Serials dilution of the cell lysate (0.2 ug, 0.4 ug, 0.8 ug, 1.6 ug, 3.2ug, 6.4 ug from left to right) were separated by SDS-PAGE and immunoblotted with Chicken anti-turboGFP polyclonal antibody (TA150075) (1:3000).