

Product datasheet for TA150042S

Clone OTI4C5, Anti-DDK (FLAG) Monoclonal Antibody, Magnetic Beads

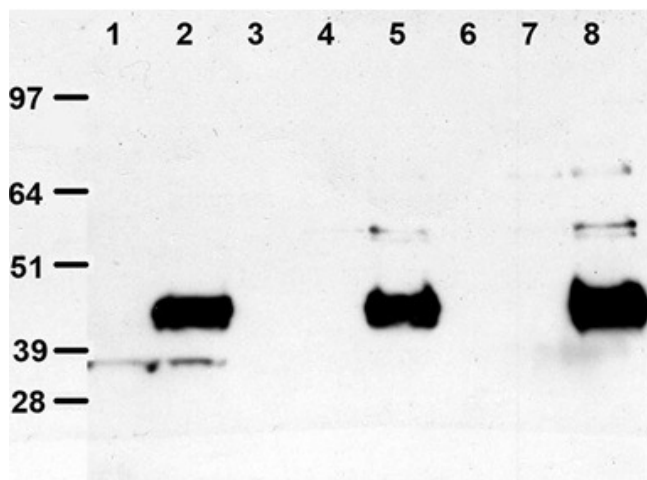
Product data:

Product Type:	Tag Antibodies
Product Name:	Clone OTI4C5, Anti-DDK (FLAG) Monoclonal Antibody, Magnetic Beads
Clone Name:	OTI4C5 (formerly 4C5)
Applications:	IP, Protein Purification
Recommended Dilution:	IP: See Datasheet
Target:	DDK (FLAG tag): DYKDDDDK
Host:	Mouse
Clonality:	Monoclonal
Immunogen:	Anti-DDK monoclonal antibody is produced by immunizing mice with a synthetic peptide (DYKDDDDK) coupled to KLH
Isotype:	IgG2a
Formulation:	PBS (pH7.4) containing 0.1% BSA, 0.02% NaN ₃ and 50% glycerol with final concentration 5mg/mL beads
Conjugation:	Magnetic Beads
Storage:	Shipped at -20°C or with ice packs, Upon delivery store at -20°C. Dilute in PBS(pH7.3) if necessary. Stable for 12 months from date of receipt. Avoid repeated freeze-thaws.
Synonyms:	ANTI DDK, ANTI-DDK, ANTIDDK, FLAG TAG, ANTI FLAG, ANTI-FLAG, ANTI FLAG ANTIBODY, FLAG ANTIBODY, M2 ANTIBODY, FLAG M2, ANTIBODY FOR FLAG, 4C5, ANTI DDK 4C5, DDK 4C5, ANTI-DDK 4C5, DYKDDDDK TAG, D-TAG ANTIBODY, ANTI D-TAG, ANTI D TAG, ANTI-D TAG, ANTI-MDDK, ANTI-MYC DDK, ANTI-MYC/DDK, MYC/DDK ANTIBODY, MYC DDK ANTIBODY, ANTI MYC DDK, ANTI DDK MYC, ANTI-DDK/MYC, ANTI-DDK MYC, FLAG AB, FLAG MAB, DDK ANTIBODY, FLAG MAGNETIC, ANTI FLAG MAGNETIC, ANTI FLAG BEAD, ANTI FLAG RESIN, ANTI-FLAG BEAD, ANTI-FLAG RESIN, ANTI-DDK RESIN, ANTI-DDK BEAD, ANTI-DDK COLUMN, ANTI-FLAG COLUMN
Note:	This antibody doesn't recognize N- terminus DDK tag. Please use TA180144 for the detection of DDK tag at any location in Western blotting.

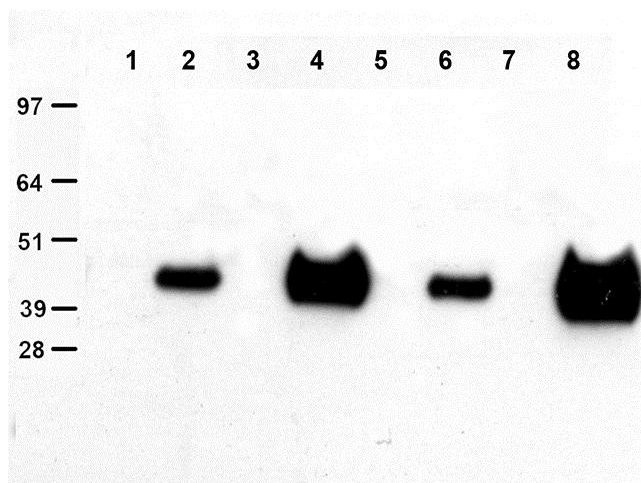


[View online »](#)

Product images:



Immunoprecipitation was performed with lysates of HEK293T cells overexpressing a GFP-tagged vector (Cat# [PS100010]) or DDK-tagged PON3 (Cat# [LY400339]). Please see datasheet for details.



Immunoprecipitation was performed with control lysate of HEK293T cells overexpressing Entry vector (control, Cat# [PS100001]) or DDK-tagged PON3 (Cat# [LY400339]). Please see datasheet for details.