

## Product datasheet for **TA100027**

### Rabbit Polyclonal Anti-6×His Antibody

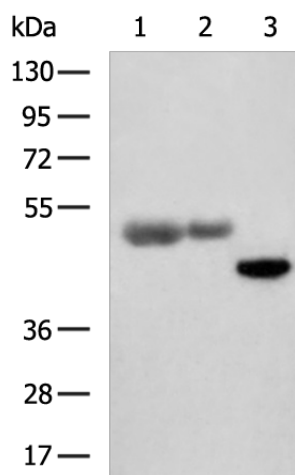
#### Product data:

Product Type:	Tag Antibodies
Product Name:	Rabbit Polyclonal Anti-6×His Antibody
Applications:	WB
Recommended Dilution:	WB: 2000-10000 WB positive control: Two fusion protein containing the HIS Tag
Reactivity:	Fusion proteins containing the HIS Tag
Host:	Rabbit
Clonality:	Polyclonal
Immunogen:	Synthetic peptide: 18×His conjugated to KLH
Isotype:	IgG
Formulation:	PBS (pH7.4) containing 1%, 40% glycerol and 0.05% sodium azide
Concentration:	lot specific
Conjugation:	Unconjugated
Storage:	Store at -20°C. For maximum recovery of product, centrifuge the original vial after thawing and prior to opening the cap. Aliquot to avoid repeated freezing and thawing.
Stability:	Stable for 1 year at -20°C from date of shipment.
Predicted Protein Size:	50 kDa
Synonyms:	anti-His; Anti-His Antibody; anti-his tag; ANTI HIS; ANTIHIS; anti his tag; ANTI HISTIDINE; his antibody; his tag antibody



[View online »](#)

## Product images:



Gel: 8%SDS-PAGE

Lysate: 1/0.5 µg

Lane 1-2: 1µg and 0.5 µg Fusion proteins containing the His Tag

Primary antibody: TA100027 (6×His Antibody) at dilution 1/2000

Secondary antibody: Goat anti rabbit IgG at 1/5000 dilution

Exposure time: 1 minute