

Product datasheet for **SP4319P**

MCH2 (MCHR2) (C-term) Rabbit Polyclonal Antibody

Product data:

Product Type:	Primary Antibodies
Applications:	IF, IHC
Recommended Dilution:	Immunocytochemistry: 10 - 20 µg/ml. Immunohistochemistry on Paraffin Sections: 21 µg/ml.
Reactivity:	Human
Host:	Rabbit
Clonality:	Polyclonal
Immunogen:	Synthetic 19 amino acid peptide from C-terminus of human MCHR2
Specificity:	Reacts with C-terminus of MCH Receptor type II (Family: GPCR, Subfamily: Melanin-concentrating hormone receptor).
Formulation:	PBS, containing 0.09% sodium azide State: Aff - Purified State: Liquid Ig fraction
Concentration:	lot specific
Purification:	Peptide immunogen affinity column
Conjugation:	Unconjugated
Storage:	Store the antibody undiluted at 2-8°C for one month or (in aliquots) at -20°C to -70°C for longer. Avoid repeated freezing and thawing.
Stability:	Shelf life: one year from despatch.
Gene Name:	melanin concentrating hormone receptor 2
Database Link:	Entrez Gene 84539 Human Q969V1



[View online »](#)

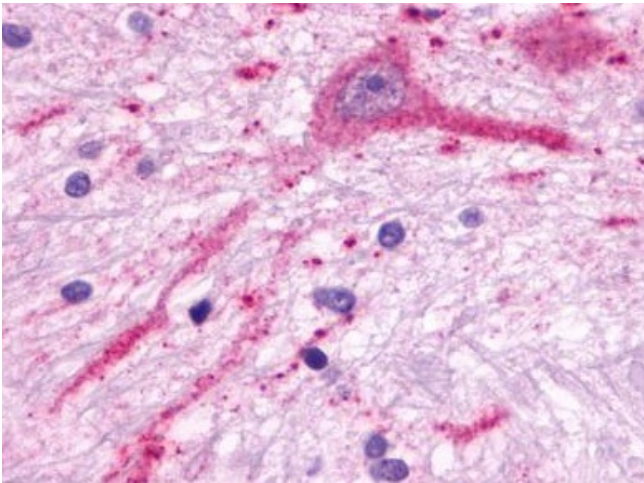
Background:

MCHR2/GPR145 is a Melanin-Concentrating Hormone Receptor. Melanin-concentrating hormone plays an important role in the control of feeding behaviors and energy metabolism. Unlike MCH1, MCH2 signaling is not sensitive to pertussis toxin, and MCH2 cannot reduce forskolin-stimulated cAMP production.

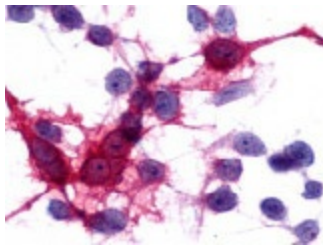
MCHR2/GPR145 is expressed predominantly in the brain. One EST has been isolated from a brain library.

Synonyms:

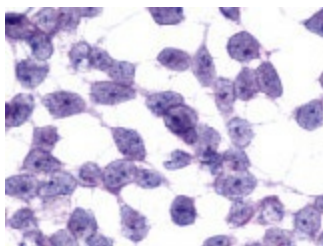
MCH receptor 2, MCHR-2, MCH-R2, MCH-2R, G-protein coupled receptor 145, GPRv17, SLT

Product images:


Immunohistochemical staining of Brain (Neurons) using anti-MCHR2 antibody



Cells expressing target protein - immunostained with target antibody



Cells expressing vector only - immunostained with target antibody