

Product datasheet for **SP4304P**

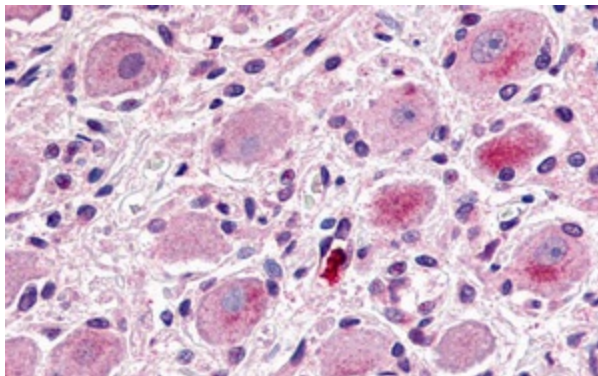
MRGX1 (MRGPRX1) (N-term, Extracel. Dom.) Rabbit Polyclonal Antibody

Product data:

Product Type:	Primary Antibodies
Applications:	IF, IHC
Recommended Dilution:	Immunocytochemistry. Immunohistochemistry on Paraffin Sections: 12 µg/ml.
Reactivity:	Human, Monkey
Host:	Rabbit
Clonality:	Polyclonal
Immunogen:	Synthetic 14 amino acid peptide from N-terminal extracellular domain of human MRGPRX1 / MRGX1
Specificity:	Reacts with G protein-coupled receptor MRGX1 (SNSR3/SNSR4) at N-term.
Formulation:	PBS containing 0.09% Sodium azide State: Aff - Purified State: Liquid Ig fraction
Concentration:	lot specific
Purification:	Immunoaffinity chromatography
Conjugation:	Unconjugated
Storage:	Store undiluted at 2-8°C for one month or (in aliquots) at -20°C to -80°C for longer. Avoid repeated freezing and thawing.
Stability:	Shelf life: one year from despatch.
Gene Name:	MAS related GPR family member X1
Database Link:	Entrez Gene 259249 Human Q96LB2
Background:	MRGX1 belongs to the Opioid Receptor subfamily because this receptor is activated by products of proenkephalin A, an opioid peptide precursor. MRGX1 has been reported exclusively in dorsal root ganglion. ESTs for MRGX1 have been identified in a human brain (hypothalamus) library and in a human cancer library.
Synonyms:	Mrgc, Mrgprx1, Mrgprc11, Snsr, Snsr1



[View online »](#)

Product images:

Immunohistochemistry staining of human ganglion cells and Schwann cells (Formalin-fixed, Paraffin-embedded tissue after heat-induced antigen retrieval) using MRGPRX1 antibody. (N-term).