

Product datasheet for **SP4262P**

GPR85 (C-term) Rabbit Polyclonal Antibody

Product data:

Product Type:	Primary Antibodies
Applications:	IF, IHC
Recommended Dilution:	Immunocytochemistry. Immunohistochemistry on Paraffin Sections: 9 - 17 µg/ml.
Reactivity:	Human, Bovine, Bat, Canine, Chicken, Equine, Hamster, Monkey, Mouse, Porcine, Rabbit, Rat, Xenopus, Zebrafish
Host:	Rabbit
Clonality:	Polyclonal
Immunogen:	Synthetic 20 amino acid peptide from C-terminus of human GPR85
Specificity:	Reacts with C-terminus of G Protein-Coupled Receptor GPR85/SREB2 (family: GPCR, subfamily: Orphan-A).
Formulation:	PBS containing 0.09% sodium azide State: Aff - Purified State: Liquid Ig fraction
Concentration:	lot specific
Purification:	Peptide immunogen affinity column
Conjugation:	Unconjugated
Storage:	Store the antibody undiluted at 2-8°C for one month or (in aliquots) at -20°C to -70°C for longer. Avoid repeated freezing and thawing.
Stability:	Shelf life: one year from despatch.
Gene Name:	G protein-coupled receptor 85
Database Link:	Entrez Gene 54329 Human P60893



[View online »](#)

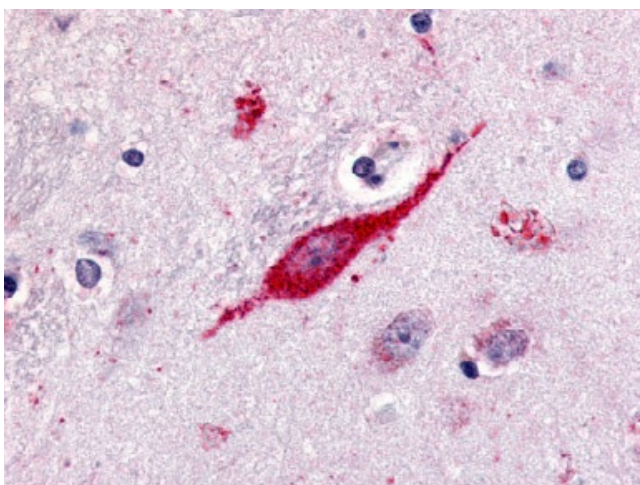
Background:

GPR85, a member of the SREB (Super-Conserved Receptor Expressed in Brain) family of GPCRs, is an Orphan-A GPCR with an unknown ligand. The rat counterpart of SREB2 is involved in the development of the cerebral cortex.

GPR85 has been reported to be expressed in several areas of human and rat CNS Matsumoto et al., 2000), as well as in genital organs. ESTs have been isolated from B-cell/lung/testis, brain, testis, and embryo libraries, as well as many mouse tissue libraries.

Synonyms:

G-protein coupled receptor 85

Product images:


Immunohistochemical staining of Brain (Neuron)
using anti-GPR85 antibody