

## Product datasheet for **SP4217P**

### GPR35 (3rd cytopl. dom.) Rabbit Polyclonal Antibody

#### Product data:

Product Type:	Primary Antibodies
Applications:	IF, IHC
Recommended Dilution:	<b>Immunocytochemistry.</b> <b>Immunohistochemistry on Paraffin Sections:</b> 5 - 9 µg/ml.
Reactivity:	Human
Host:	Rabbit
Clonality:	Polyclonal
Immunogen:	Synthetic 19 amino acid peptide from 3rd cytoplasmic domain of human GPR35
Specificity:	Reacts with G Protein-Coupled Receptor GPR35 (family: GPCR, subfamily: Orphan-A)
Formulation:	PBS containing 0.09% sodium azide State: Aff - Purified State: Liquid Ig fraction
Concentration:	lot specific
Purification:	Peptide immunogen affinity column
Conjugation:	Unconjugated
Storage:	Store the antibody undiluted at 2-8°C for one month or (in aliquots) at -20°C to -70°C for longer. Avoid repeated freezing and thawing.
Stability:	Shelf life: one year from despatch.
Gene Name:	G protein-coupled receptor 35
Database Link:	<a href="#">Entrez Gene 2859 Human Q9HC97</a>



[View online »](#)

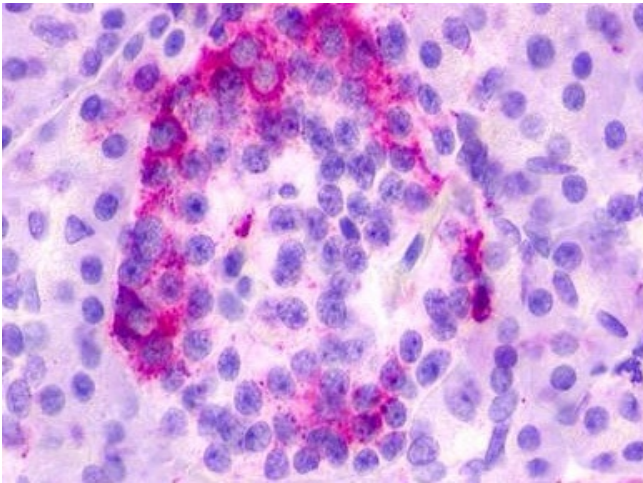
**Background:**

GPR35 is an Orphan-A GPCR with an unknown ligand.

GPR35 expression was reported only in rat intestine by Northern hybridization; however, another study showed that GPR35 is expressed widely, including pancreatic islets and skeletal muscle, with higher levels in adult lung, small intestine, colon, and stomach. ESTs have been isolated from human fetal lung/testis/B-cell, colon (normal, cancer, and Crohn's disease), breast cancer, pancreatic cancer, and leukemia libraries.

**Synonyms:**

G-protein coupled receptor 35, Kynurenic acid receptor, KYNA receptor

**Product images:**

Immunohistochemical staining of Pancreas using anti-GPR35 antibody