

Product datasheet for **SP4177P**

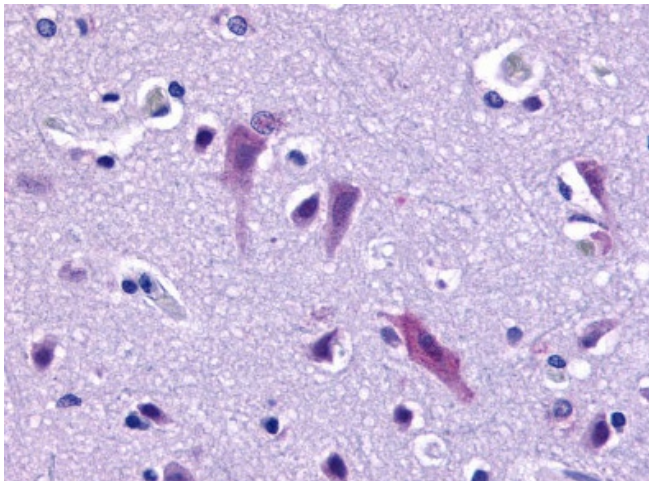
GPR103 (QRFPR) (C-term) Rabbit Polyclonal Antibody

Product data:

Product Type:	Primary Antibodies
Applications:	IHC
Recommended Dilution:	Immunohistochemistry on Paraffin Sections: 10 µg/ml.
Reactivity:	Human
Host:	Rabbit
Clonality:	Polyclonal
Immunogen:	Synthetic 20 amino acid peptide from the C-terminal cytoplasmic domain of human QRFPR / GPR103
Specificity:	This antibody detects C-terminal cytoplasmic domain of G Protein-Coupled Receptor GRP103 (Family: GPCR; Subfamily: Orphan-U).
Formulation:	PBS containing 0.09% Sodium Azide as preservative State: Aff - Purified State: Liquid purified Ig fraction
Concentration:	lot specific
Purification:	Immunoaffinity Chromatography
Conjugation:	Unconjugated
Storage:	Store the antibody undiluted at 2-8°C for one month or (in aliquots) at -20°C to -70°C for longer. Avoid repeated freezing and thawing.
Stability:	Shelf life: one year from despatch.
Gene Name:	pyroglutamylated RFamide peptide receptor
Database Link:	Entrez Gene 84109 Human Q96P65
Background:	The G protein-coupled receptor GPR103 is an Orphan-U GPCR with an unknown ligand. ESTs have been isolated from human B-cell/lung/testis, brain, breast, eye, head/neck, kidney, placenta, and prostate libraries. Ligand: Peptide P518 and pyroglutamylated arginine-phenylalanine-amide peptide.
Synonyms:	Orexigenic neuropeptide QRFP receptor, G-protein coupled receptor 103, SP9155, AQ27



[View online »](#)

Product images:

Immunohistochemical staining of Brain (Neurons and Glia) using anti-GPR103 antibody