

Product datasheet for **SP4124P**

Endothelin B Receptor (EDNRB) (N-term, Extracel. Dom.) Rabbit Polyclonal Antibody

Product data:

Product Type:	Primary Antibodies
Applications:	IF, IHC, WB
Recommended Dilution:	Immunocytochemistry. Immunohistochemistry on Paraffin Sections: 4 - 11 µg/ml. Western Blot.
Reactivity:	Canine, Human
Host:	Rabbit
Clonality:	Polyclonal
Immunogen:	Synthetic 19 amino acid peptide from N-terminal extracellular domain of human EDNRB
Specificity:	Detects N-terminal extracellular domain of Endothelin B Receptor (Family: GPCR; Subfamily: Endothelin).
Formulation:	PBS containing 0.09% Sodium Azide as preservative State: Aff - Purified State: Liquid purified IgG fraction
Concentration:	lot specific
Purification:	Peptide Immunogen Affinity Chromatography
Conjugation:	Unconjugated
Storage:	Store undiluted at 2-8°C for one month or (in aliquots) at -20 to -70°C for longer. Avoid repeated freezing and thawing.
Stability:	Shelf life: one year from despatch.
Gene Name:	endothelin receptor type B
Database Link:	Entrez Gene 1910 Human P24530



[View online »](#)

Background:

The Endothelin Receptor ETB is expressed in most tissues. Mutations of the receptor gene are responsible for Hirschsprung disease type 2, a multigenic disorder with phenotypes such as bicolored irides, megacolon, hypopigmentation, and hearing loss. The ETB receptor has similar affinity for all three endothelins and activates a phosphatidylinositol-calcium second messenger system. A splice variant, termed SVR, has been described; the sequence of the ETB-SVR receptor is identical to ET-B receptor, with the exception of the intracellular C-terminal domain. While both splice variants bind endothelin ET1, they exhibit different responses, which suggests that they may be functionally distinct.

The endothelin B receptor has been reported to be expressed in adrenal, aorta, artery, brain, breast, eye, epididymis, ganglion, heart, kidney, liver, lung, ovary, placenta, prostate, skin, testis, uterus, and vessel.

Synonyms:

ET-BR, ET-B, EDNRB, ETRB, ETB, ETBR, HSCR, WS4A, ABCDS, HSCR2

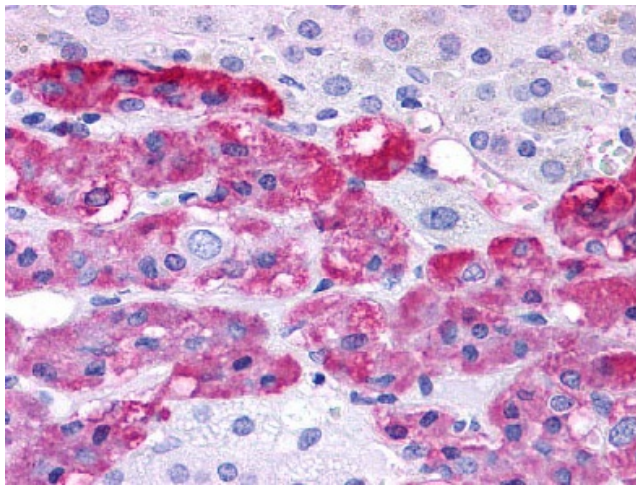
Product images:


Figure 1. Immunohistochemical staining of Adrenal (Medulla) using anti-Endothelin B Receptor antibody.

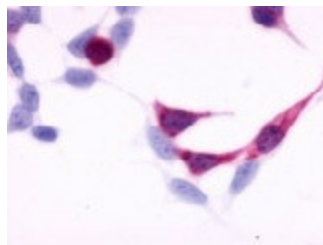


Figure 2. Cells expressing target protein-immunostained with target antibody.

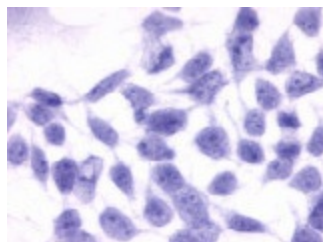


Figure 3. Cells expressing vector only - immunostained with target antibody